

***Local Governments Responding to
HIV/AIDS and Urban Poverty***

Recommendations

Richard Tomlinson and Ishmael Mkhabela

**Joint SACN Reference Group Meeting
Nelson Mandela Metropolitan Municipality
10th November 2005**

Presenting

Policy Context

What's the HIV/AIDS Problem?

What's the HIV/AIDS Poverty Problem?

Recommendations

**where local governments can play a role in
mitigating the impacts of poverty on HIV/AIDS and
HIV/AIDS on poverty**

Policy Context - National

- ***HIV/AIDS/STD Strategic Plan for South Africa, 2000-2005***
- ***Operational Plan for Comprehensive HIV and AIDS Care, Management and Treatment for South Africa, 2003***
- **Focus on prevention and care and support**
- **Neither pays much attention to poverty and neither accords a significant role to local government.**

Policy Context - Provincial

- **Focus on prevention and care and support**
- **Provinces have played the predominant role in mitigating the poverty impacts of HIV through the delivery of social grants.**
- **This function is to shift to the national Social Security Agency**
- **No significant role for local government re. HIV/AIDS and urban poverty**

Policy Context - Local

- **Focus on prevention and care and support**
- **Stage of infection – Prioritising prevention and care and support was a rational response to the stage reached by HIV/AIDS in South Africa. In the early 2000s, with the number of AIDS-sick and AIDS-deaths increasing rapidly, attention will shift to HIV/AIDS poverty.**

Policy Context – NGOs, CBOs, FBOs

- **Central to the delivery of prevention and care and support activities and receive considerable support from government to this end.**
- **Participation and effective contribution is an important feature of the policy context**
- **As is advocacy, lobbying, and monitoring**

Policy Context – Essential Debate

- **Distinguish between households whose poverty arises from HIV/AIDS and other households whose poverty arises from other causes?**
- **Qualified answer is that it is incorrect to favour individuals and households whose poverty arises from being AIDS-sick and from AIDS deaths.**

Policy Context

Exploration of the role and contribution of local government uncharted by policy.

What's the HIV/AIDS Problem?

The Numbers

Year	Total HIV+	Total AIDS sick	Cumulative AIDS deaths	Total orphans (incl. non-AIDS)
1990	38 597	293	326	436 352
1995	943 590	16 135	20 662	458 431
2000	3 731 645	194 424	318 697	644 753
2005	5 165 797	589 454	1 542 169	1 297 197
2010	5 408 621	692 511	3 404 415	2 039 353
2015	5 407 945	742 261	5 358 501	2 301 177

What's the HIV/AIDS Problem?

Not all those who are HIV+

<i>WHO stages 1 to 4</i>	<i>Performance scale</i>	<i>14+ No. infected</i>
1. Acute HIV infection	Fully active and asymptomatic	1 476 000
2. Early disease	Symptomatic but nearly normal activity	1 098 000
3. Late disease	Bedridden < 50% of normal daytime	1 671 000
4. AIDS	Bedridden > 50% of normal daytime	534 000

What's the HIV/AIDS Problem?

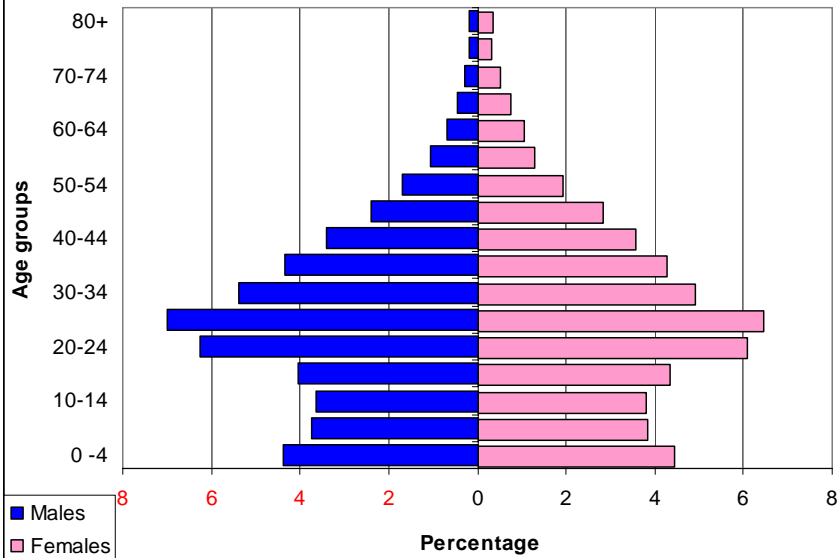
HIV prevalence in an area is higher the higher the proportion of the population that:

- **is African**
- **is female**
- **falls within especially the 20-34 age group**
- **lives in cities**
- **lives informal settlements in cities**
- **lives in rapidly growing cities**
- **lives in high prevalence provinces**

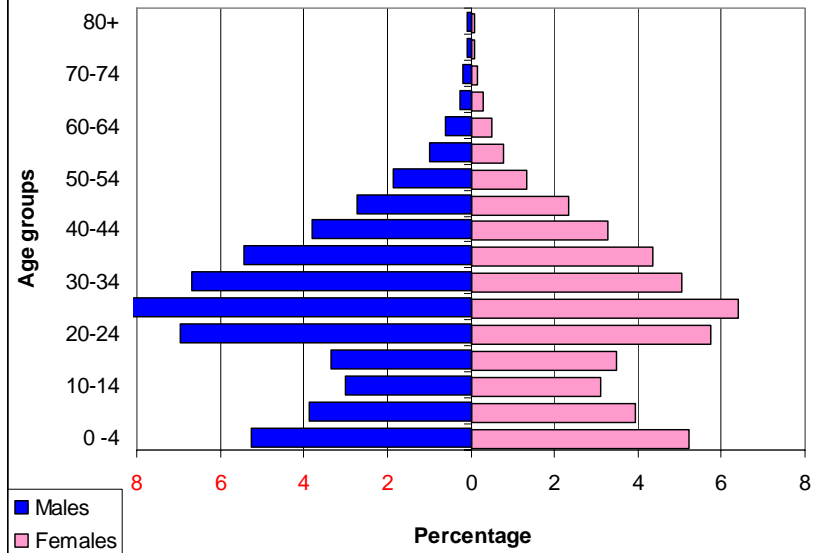
Johannesburg

(African population)

Formal Population 2001



Informal Population 2001



What's the HIV/AIDS Poverty Problem?

- **Poverty and HIV infection problem is that of poverty and gender inequality leading to behaviour that increases the risk of HIV infection**
- **HIV/AIDS and poverty problem largely arises when persons are AIDS-sick.**
- **As AIDS deaths accumulate, the greatest poverty problem will become household reconfiguration and the increased dependency burden following the death of income-earning individuals and also of individuals who are receiving social grants.**
- **Household reconfiguration largely transfers the poverty problem to children, women and the elderly**

What's the HIV/AIDS Poverty Problem?

Ongoing poverty problems:

- **Sexually transmitted infections**
- **Inadequate nutrition**
- **Unhygienic water and sanitation, poor waste removal, limited energy**

A compromised immune system can increase susceptibility to HIV infection and can reduce the periods between HIV infection and the onset of “full-blown” AIDS and “full-blown” AIDS and death.

What's the HIV/AIDS Poverty Problem?

Living circumstances. It is possible to use housing and services to

- **prevent HIV infection (marginal significance)**
- **prevent opportunistic infections (significant)**
- **lengthen the periods between HIV infection and the onset of “full-blown” AIDS and the onset of “full-blown” AIDS and death (probably significant)**
- **provide care (critical)**
- **reduce the disruptive influence of illness and death on household cohesion and development prospects (significant).**

What's the HIV/AIDS Poverty Problem?

'AIDS transfers individual and familial survival onto a less resourced and often socially disadvantaged core of people. The burden of care is pushed upwards, particularly onto grandmothers; outwards, particularly onto adult female kin; and downwards, to children themselves. Few are sufficiently well resourced to take this on.'

Child-headed?

What's the HIV/AIDS Poverty Problem?

- **The pressure on families and communities and the challenges to community organisation represent a form of poverty which contributes both to HIV infection and difficulty mitigating the impact of AIDS-sickness and death.**

Recommendations – Leadership

- **Education and prevention activities**
- **Planning**
- **Build social capital**
- **Health**
- **Income support and opportunities to escape poverty**
- **Housing and services**

Recommendations – Planning

- **Assess the prevalence of HIV/AIDS in the city and the problems to which it is giving rise**
- **Critical data gap** – household reconfiguration
- **Mainstream HIV/AIDS and poverty mitigation within the IDP**

Recommendations – Social Capital

- **Attitudes towards vulnerable groups**
- **Cultural norms of reciprocity**
- **Protection against exploitation**
- **Support and work with civil society and faith-based organisations**
- **Resources for community organisation**
- **Build sustainable communities**

Recommendations - Health

- **Free health care e.g. for sexually transmitted diseases**
- **Access to antiretroviral drugs**
- **Nutrition programmes – food parcels, food gardens, school nutrition**
- **Housing and services**

Recommendations – Income Support

- **Social grants**
- **Nutrition programmes – food parcels, food gardens, school nutrition**
- **Protection of jobs against stigma**
- **Free burials**
- **Promotion of economic development**
- **Free schooling and provision of school uniforms**
- **Subsidised housing and services**

Recommendations – Housing and Services

- **Housing subsidy**
- **Free basic services**
- **Protection of property rights**
- **Different forms of delivery of housing and services**
- **Prioritise informal settlements and run-down inner city areas**
- **Build sustainable communities**