

3rd SACN Urban Conference

State of South African Cities

‘Building the City’:

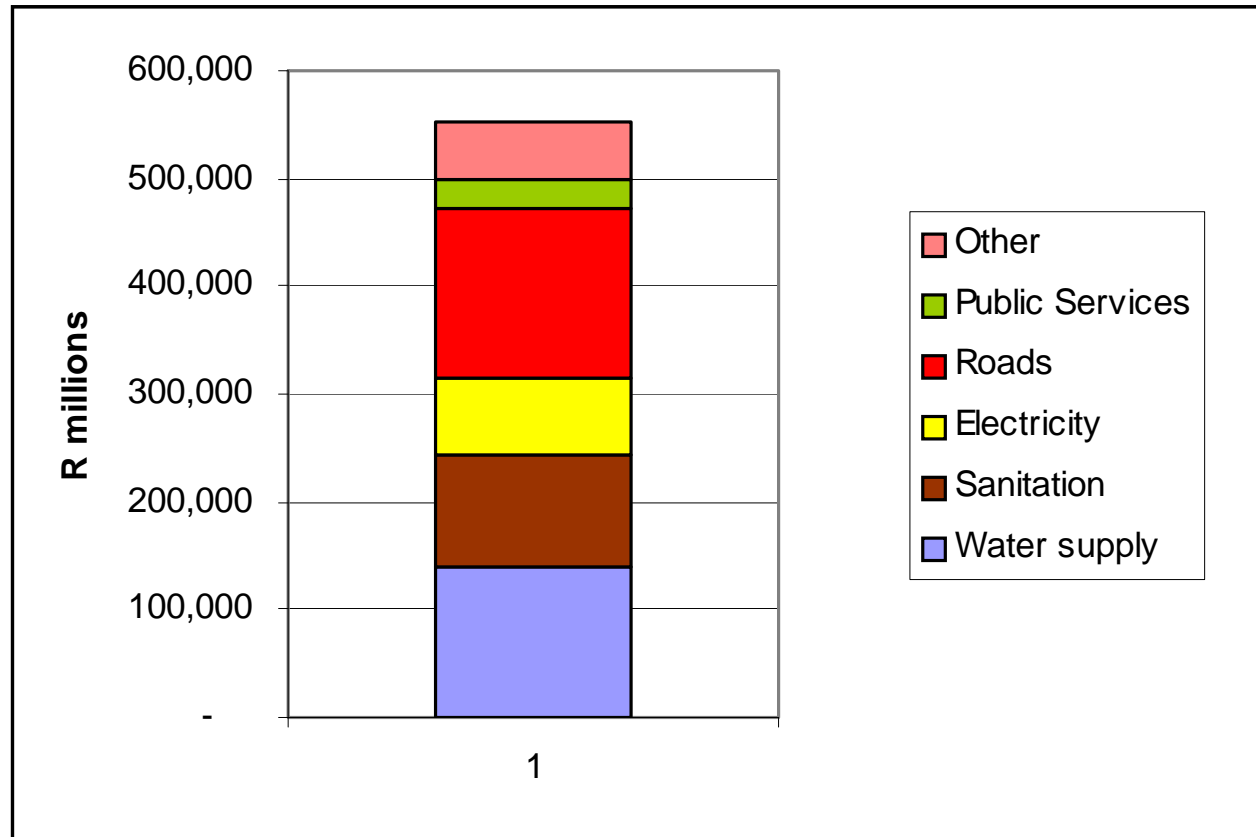
Challenges relating to infrastructure delivery

Ian Palmer

Introduction

- Information used is primarily from Municipal Infrastructure Investment Framework (MIIF), with updates done for the World Bank.
- I would like to acknowledge:
 - DBSA for their ongoing support of the MIIF evolution over the last 12 years.
 - COGTA for their support of the MIIF.
 - National Treasury who have also supported the development of the modelling techniques used in the MIIF.
 - The World Bank who have assisted with some of the later model features.

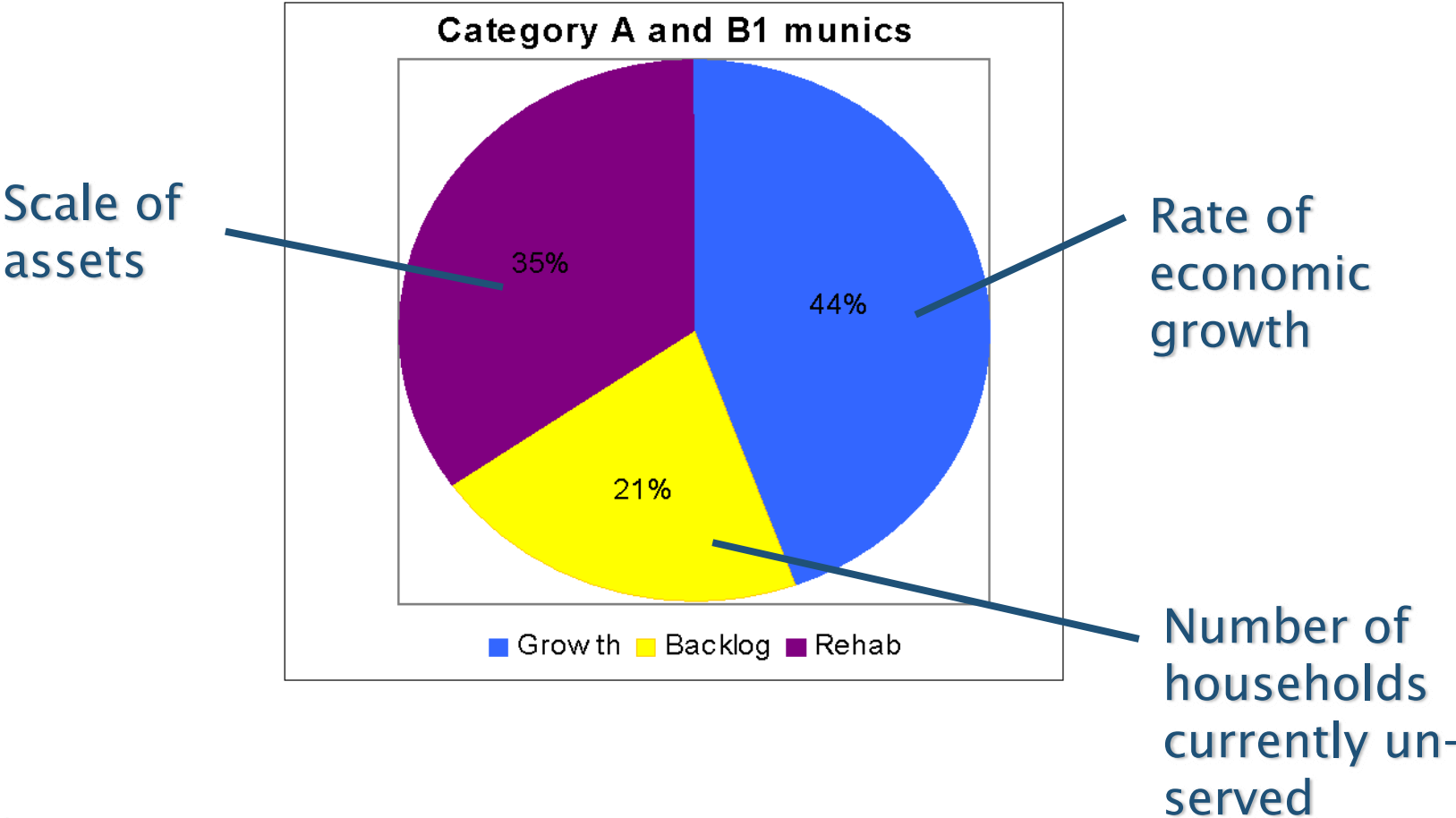
Infrastructure asset value (2009)



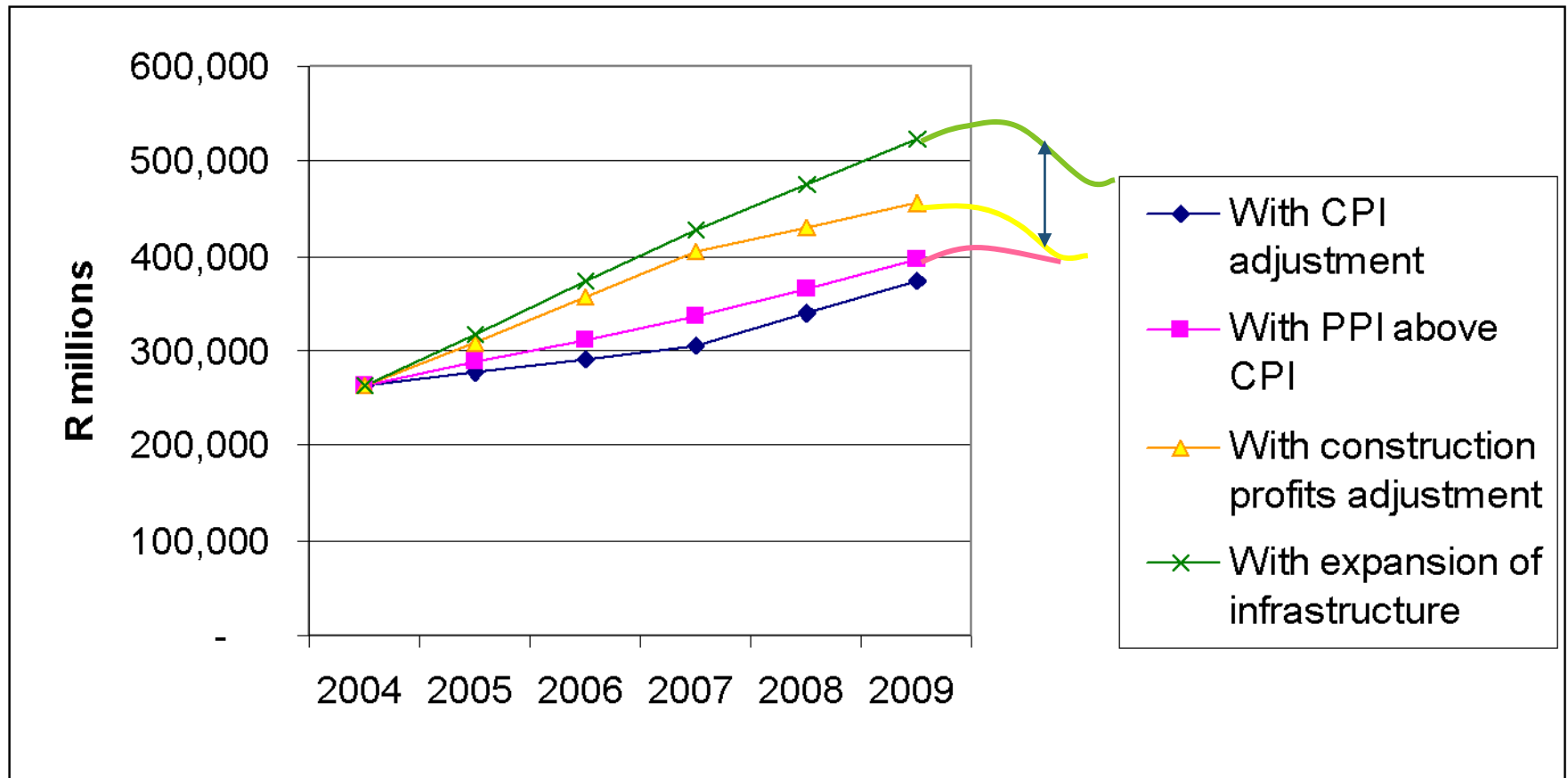
Note:

- Figures from MIF Round 7, for 6 metros only.
- Figures for all service providers (incl Eskom and water boards)

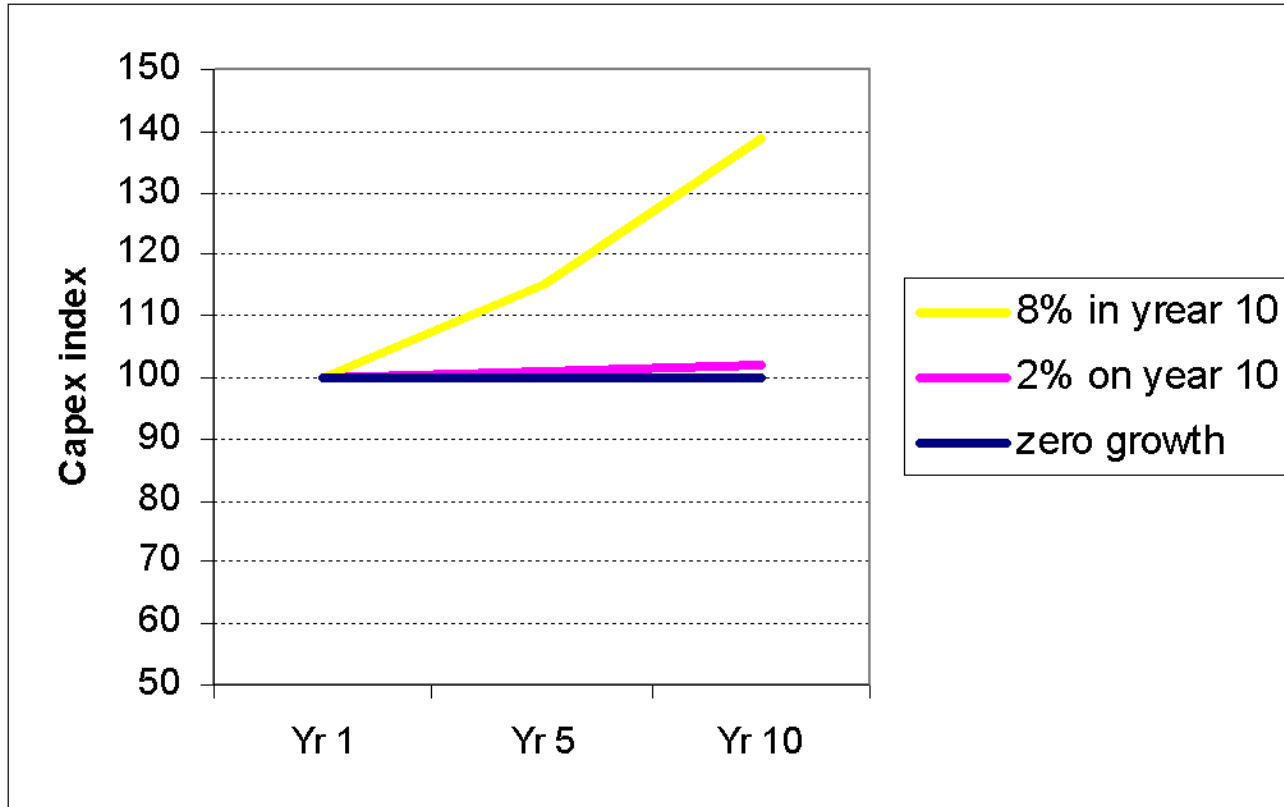
Structure of expenditure on assets



Asset expansion trends



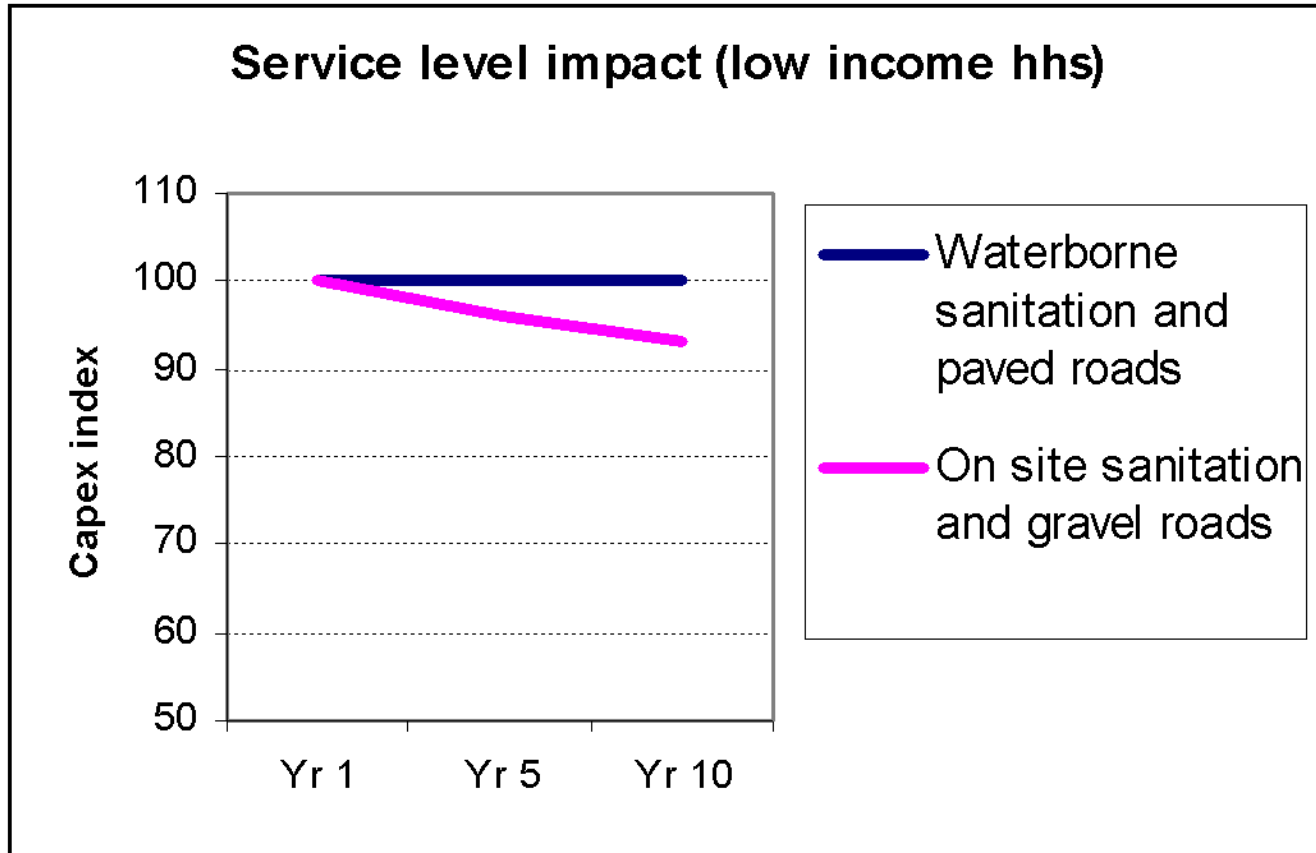
Impact of economic growth



Note: Index reflects expansion of infrastructure in relation to base position
(Base position does not mean no capex)

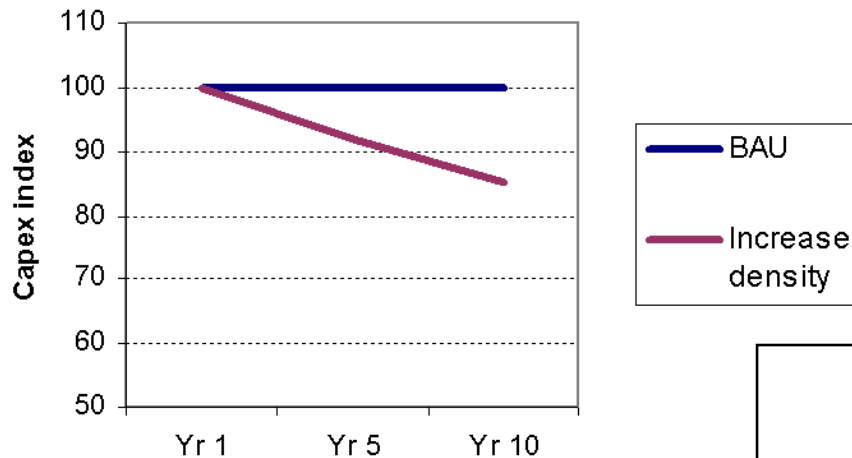
Factors impacting on infrastructure expenditure

Infrastructure and service levels



Infrastructure and space

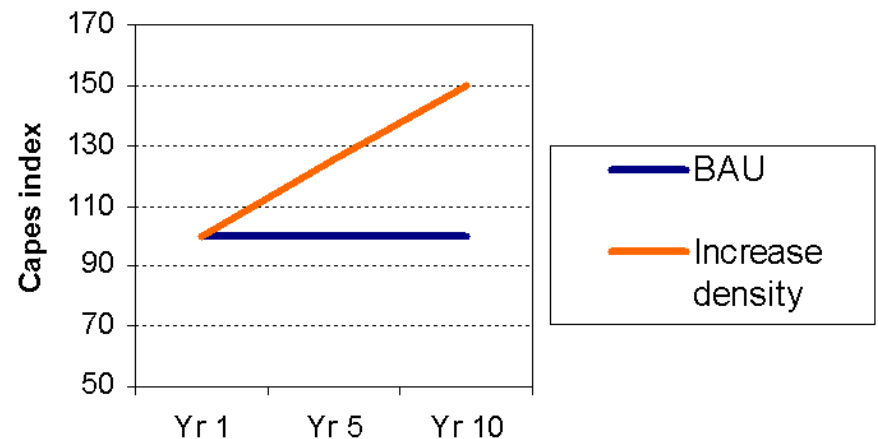
Impact of density on infrastructure



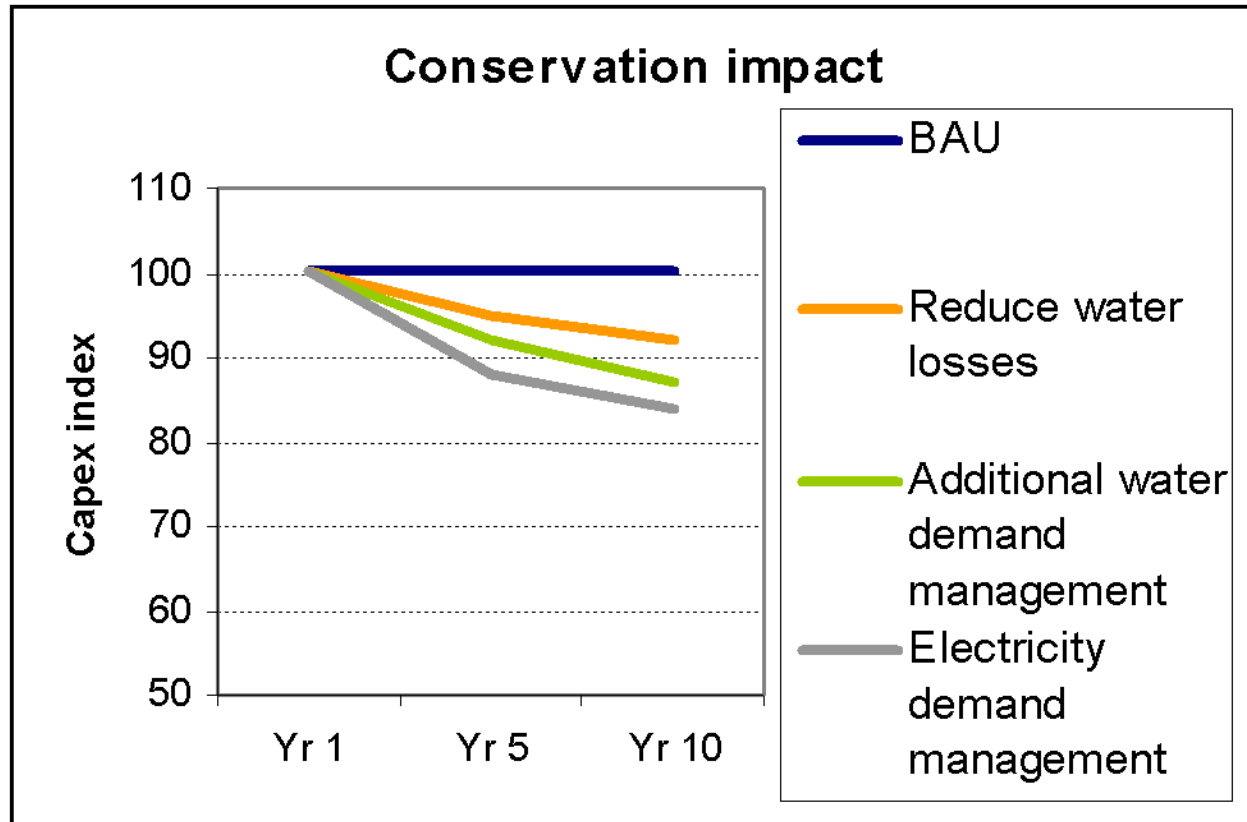
Reduce plot frontage from 7 to 3 m per DU

Shift from RDP style to multiple dwelling units

Impact of density on house top structure



Infrastructure and environment



Water loss reduction from 27% to 15%

Water use by high inc hhs: 300 to 200 kl/month

Electricity use by high inc hhs: 750 to 500 kWh/month

Infrastructure and targets

