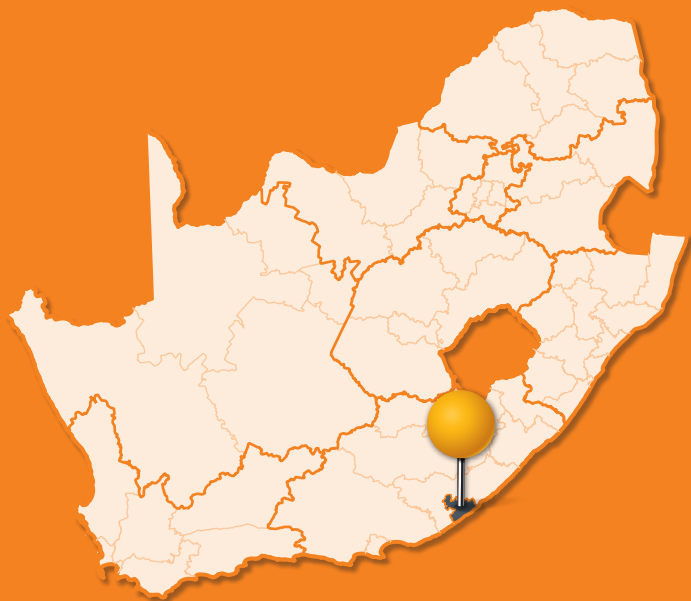


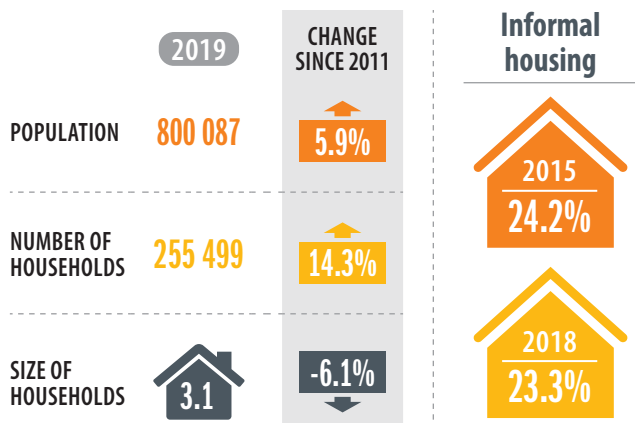


BUFFALO CITY METROPOLITAN MUNICIPALITY

Buffalo City Metropolitan Municipality lies between the Nahoon River and the Buffalo River, covering an area of 2750 km² and with a population density (in 2019) of 290 people per km². It includes the town of East London, which is home to South Africa's only river port.

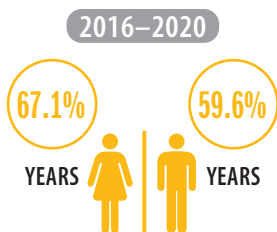


PEOPLE AND HOUSEHOLDS

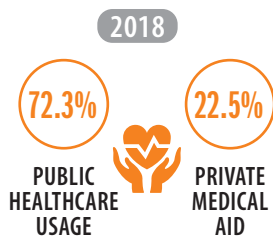


SOCIAL FABRIC

Life expectancy



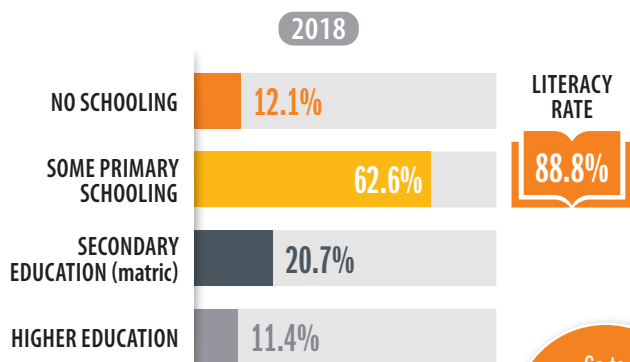
Healthcare



Levels of poverty



Education



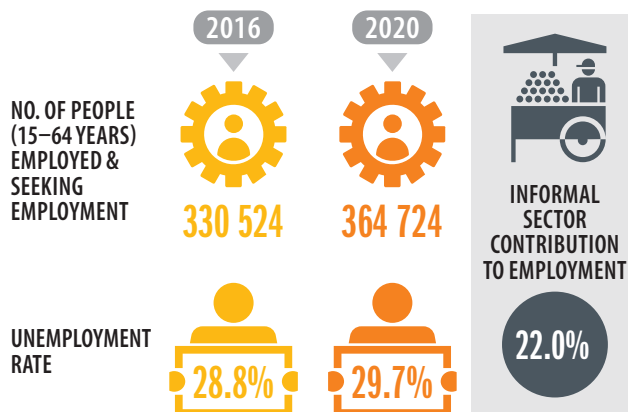
Go to SCODA to access SAFETY DATA for Buffalo City

ECONOMY

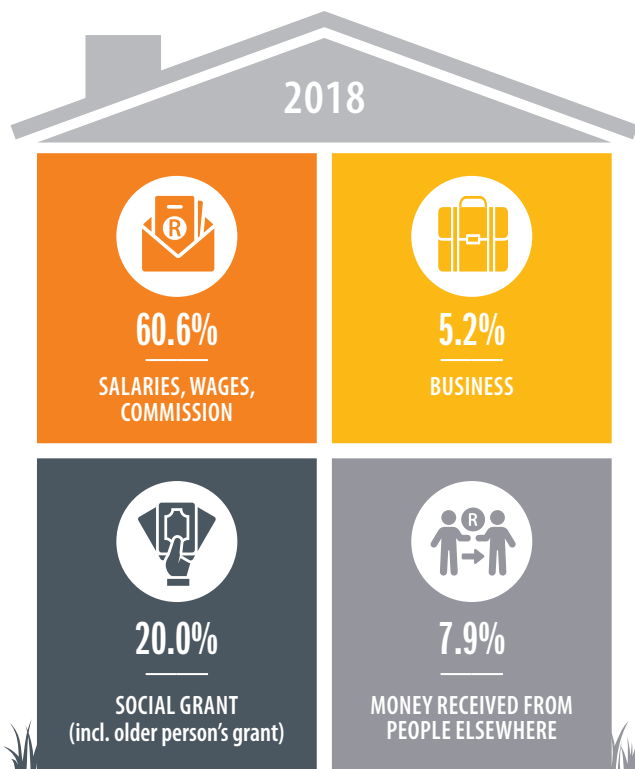
Contribution to the national economy (GVA)



Employment



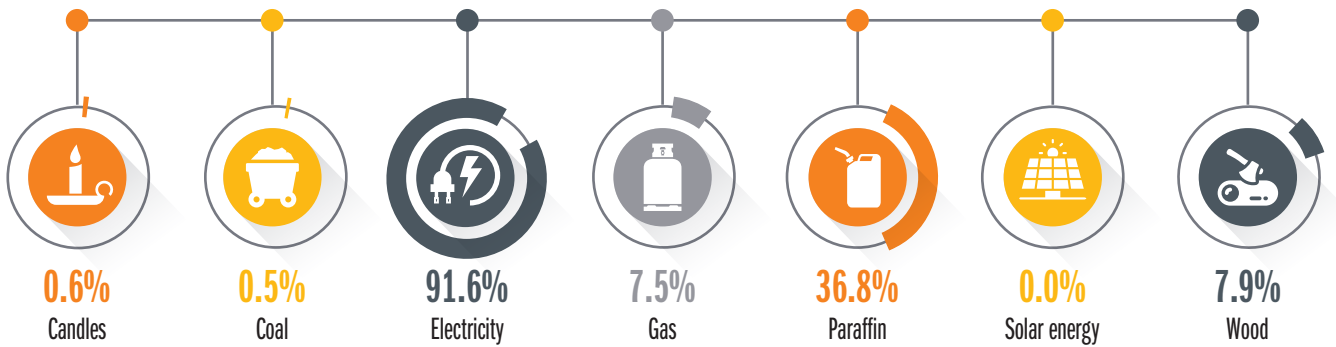
Main source of income for households



SUSTAINABILITY

Main source of energy/fuel for population

2018



Households and recycling

93.4%

OF HOUSEHOLDS DO NOT SEPARATE THEIR WASTE



4.3% sorted for or by waste pickers



2.3% collected or dropped off at recycling depot



Households and environmental problems



35.2%

Air pollution

24.6%

Water pollution



2019



48.4%

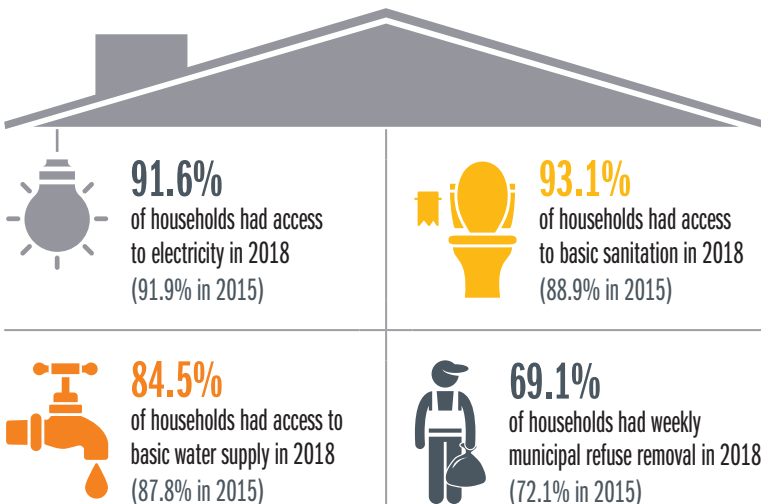
Waste removal & littering

52.3%

Land degradation



SERVICE DELIVERY



ICT connections per 100 000 people in 2018



6.7%

Fixed-landline telephone



94.9%

Mobile telephone



69.4%

Internet connections

80 831 domestic consumer units received free basic services in 2019

CITIZEN ENGAGEMENT

Local government elections

2016

NUMBER OF REGISTERED VOTERS



419 044

VOTER TURNOUT



56.1%

National elections

2019

NUMBER OF REGISTERED VOTERS



421 247

VOTER TURNOUT



65.5%

For more FINANCE DATA, go to SCODA

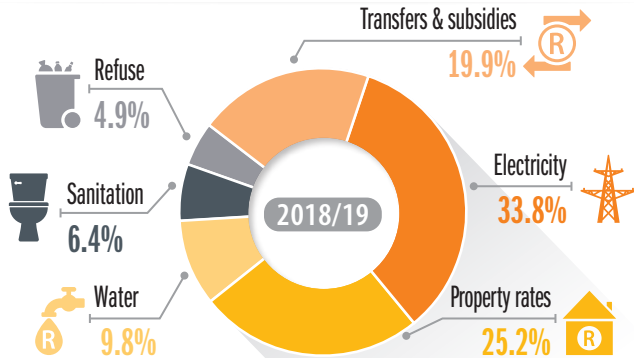
CITY FINANCE

Municipal revenue

2018/19

TOTAL REVENUE ▶ **R6 144-million**

REVENUE BY SOURCE



Audit outcomes

2018/19



Unauthorised expenditure

R43.0 MILLION



Irregular expenditure

R132.5 MILLION



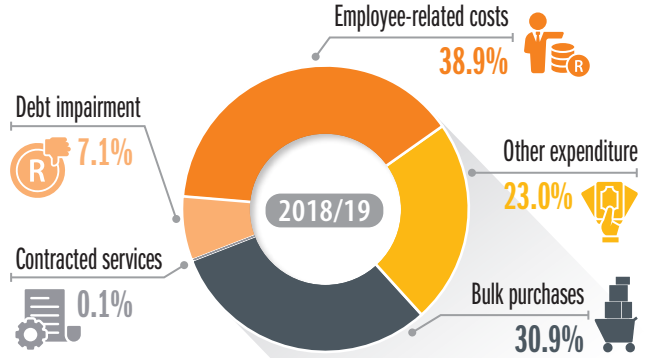
Fruitless & wasteful expenditures

R12.4 MILLION

Operating expenditure

2018/19

TOTAL EXPENDITURE ▶ **R6 846-million** ▶ 105% of budget spent



Capital expenditure

2018/19

TOTAL EXPENDITURE ▶ **R1 760-million** ▶ 100% of budget spent

Maintenance as % of operating expenditure

2009 ▶ 2015 ▶ 2020
6.0% ▶ 3.0% ▶ 2.0%



National Treasury recommends cities should spend at least

8.0%

TRANSPORT

Mode of transport to education or work

	Bicycle/motorcycle	Bus (public)	Car (private/company)	Taxi (minibus, sedan & bakkie)	Train	Walking	Other
2015	1.0%	1.3%	25.7%	20.3%	2.9%	33.3%	11.3%
2018	0.4%	2.7%	26.0%	26.5%	1.7%	31.1%	11.3%

IN 2018



of commuters have a travel time to work of more than 60 minutes.



of households spent more than 10% of their income on public transport (80.3% in 2015)

