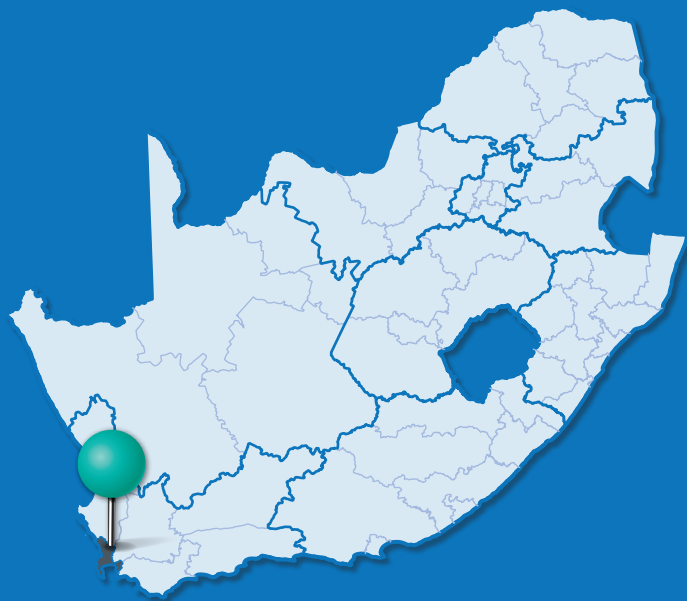




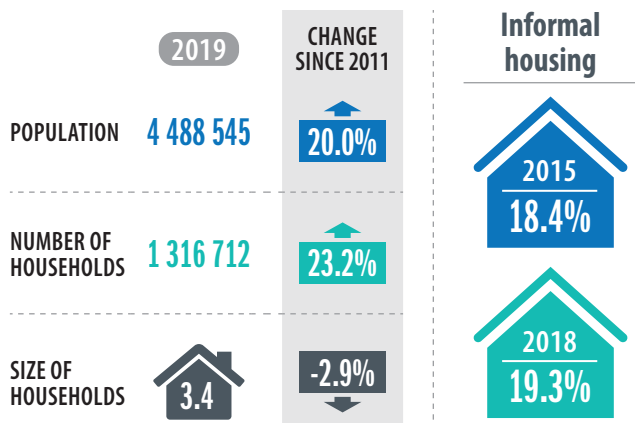
# CITY OF CAPE TOWN

---

The City of Cape Town includes South Africa's second largest city (Cape Town) – South Africa's legislative capital and the capital of the Western Cape Province. It covers an area of 2445 km<sup>2</sup> and has a population density (in 2019) of 1835 people per km<sup>2</sup>.

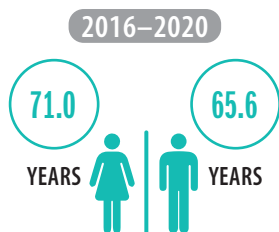


## PEOPLE AND HOUSEHOLDS

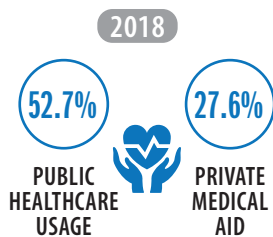


## SOCIAL FABRIC

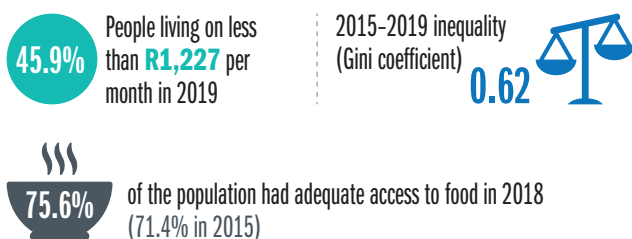
### Life expectancy



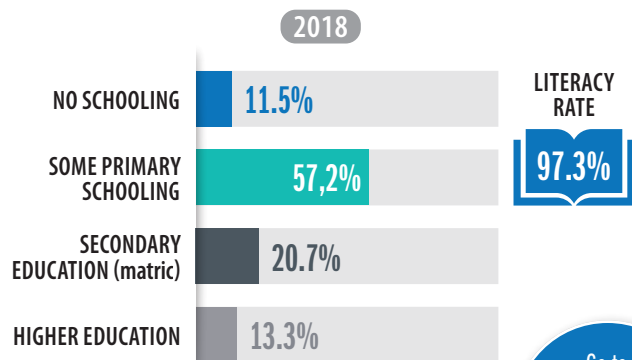
### Healthcare



### Levels of poverty



### Education



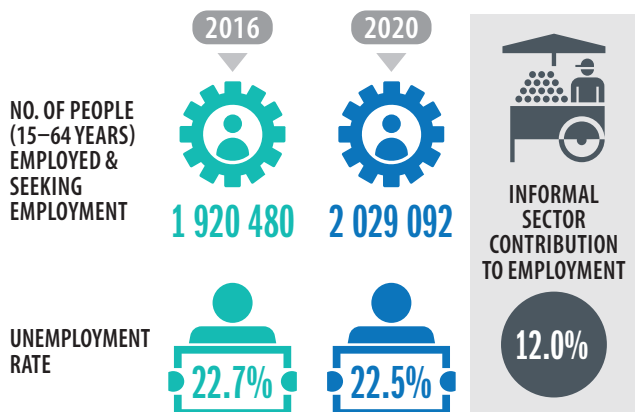
Go to SCODA to access SAFETY DATA for Cape Town

## ECONOMY

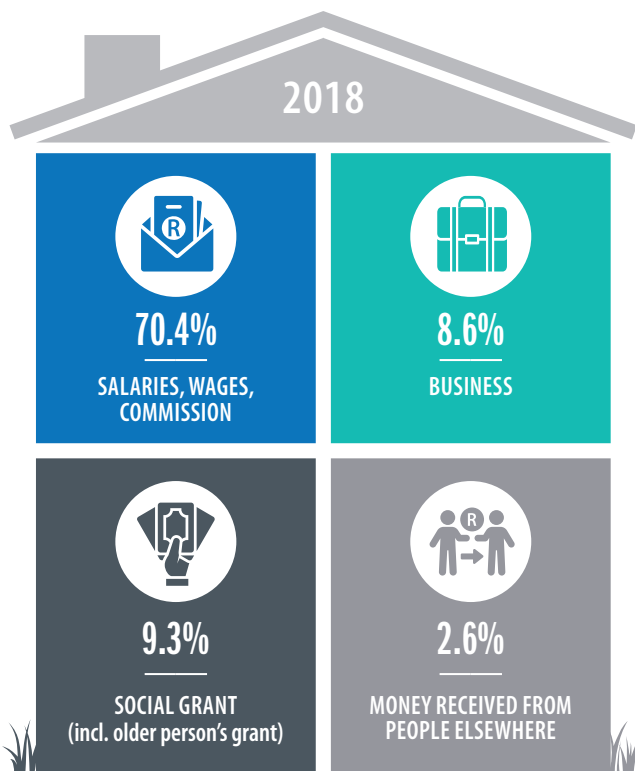
### Contribution to the national economy (GVA)



### Employment



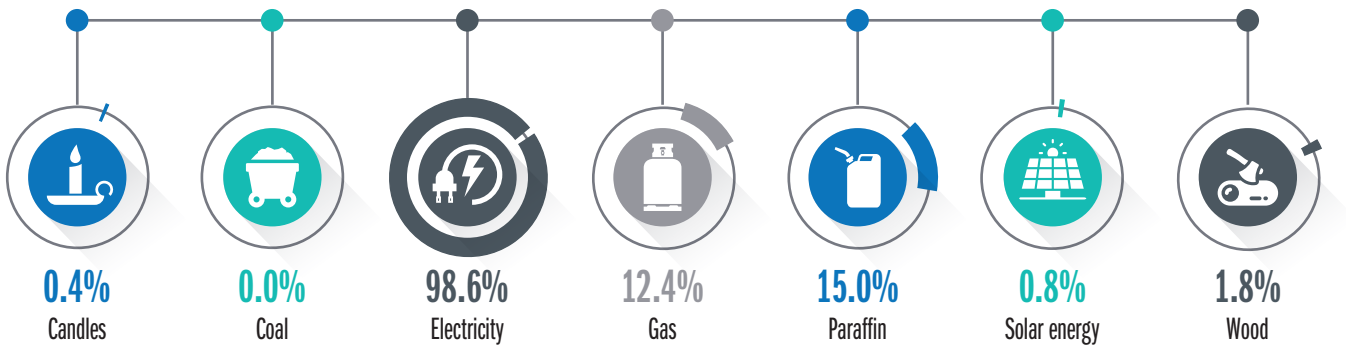
### Main source of income for households



## SUSTAINABILITY

### Main source of energy/fuel for population

2018



### Households and recycling

**64.0%** OF HOUSEHOLDS DO NOT SEPARATE THEIR WASTE

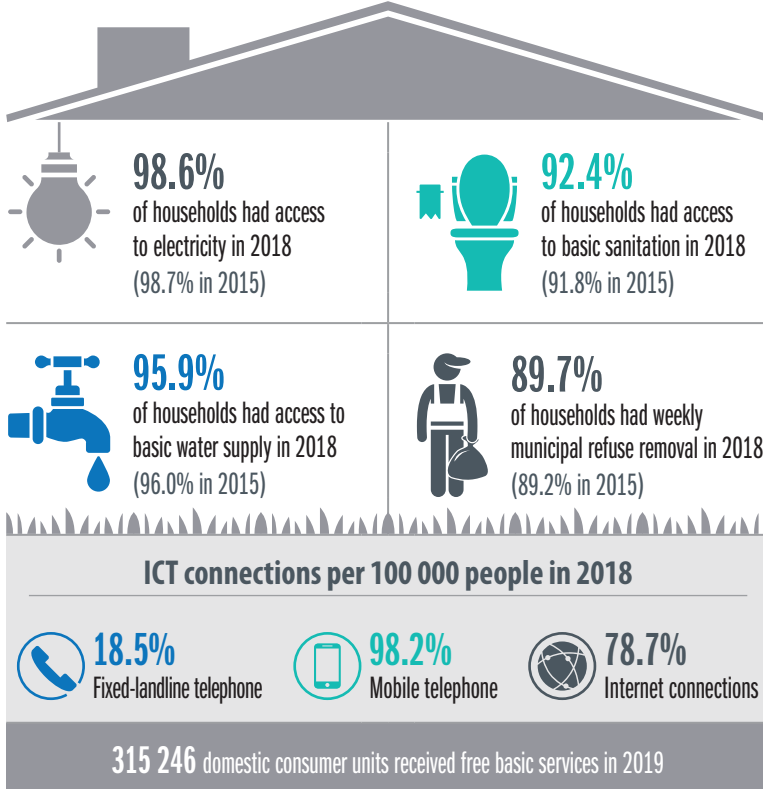
**18.7%** sorted for or by waste pickers

**17.3%** collected or dropped off at recycling depot

### Households and environmental problems



## SERVICE DELIVERY



## CITIZEN ENGAGEMENT

### Local government elections

2016

NUMBER OF REGISTERED VOTERS



1 977 690

VOTER TURNOUT



64.3%

### National elections

2019

NUMBER OF REGISTERED VOTERS



2 008 243

VOTER TURNOUT



69.8%

For more FINANCE DATA, go to SCODA

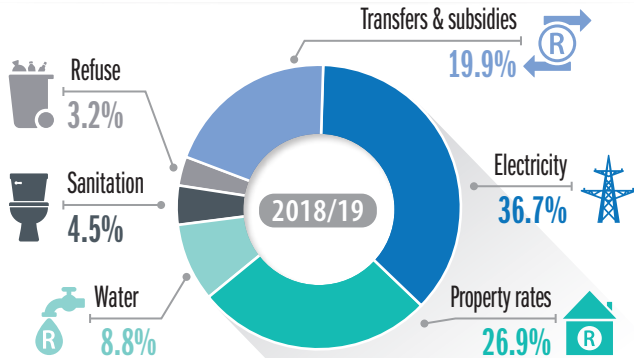
## CITY FINANCE

### Municipal revenue

2018/19

TOTAL REVENUE ▶ **R40 474-million**

#### REVENUE BY SOURCE



### Audit outcomes

2018/19



Unauthorised expenditure

No data



Irregular expenditure

**R950.4 MILLION**



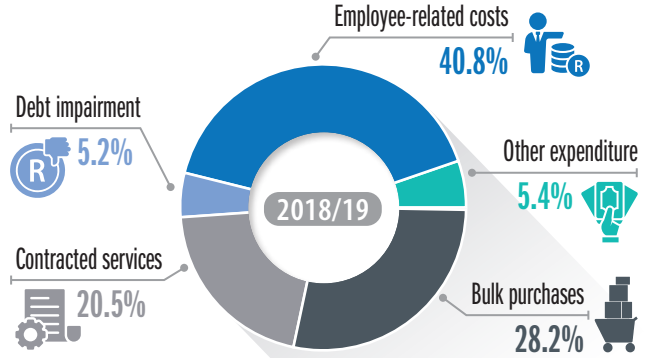
Fruitless & wasteful expenditures

**R19.8 MILLION**

### Operating expenditure

2018/19

TOTAL EXPENDITURE ▶ **R36 164-million** ▶ 91% of budget spent



### Capital expenditure

2018/19

TOTAL EXPENDITURE ▶ **R5 382-million** ▶ 64% of budget spent

### Maintenance as % of operating expenditure

2009 ▶ 2015 ▶ 2020  
5.4% ▶ 9.0% ▶ 8.0%



National Treasury recommends cities should spend at least

**8.0%**

## TRANSPORT

### Mode of transport to education or work

	Bicycle/motorcycle	Bus (public)	Car (private/company)	Taxi (minibus, sedan & bakkie)	Train	Walking	Other
2015	0.8%	7.9%	37.5%	13.9%	9.9%	22.4%	7.2%
2018	1.3%	8.1%	38.2%	17.2%	4.9%	21.8%	8.1%

IN 2018



of commuters have a travel time to work of more than 60 minutes.



of households spent more than 10% of their income on public transport (76.9% in 2015)

