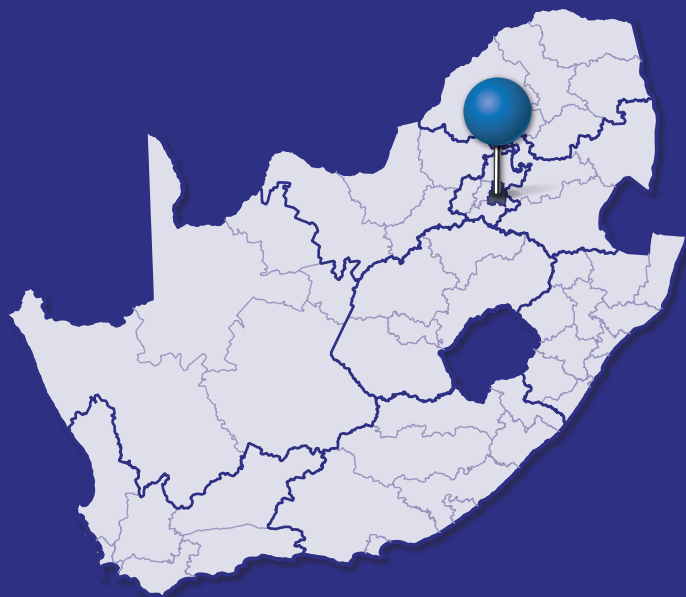


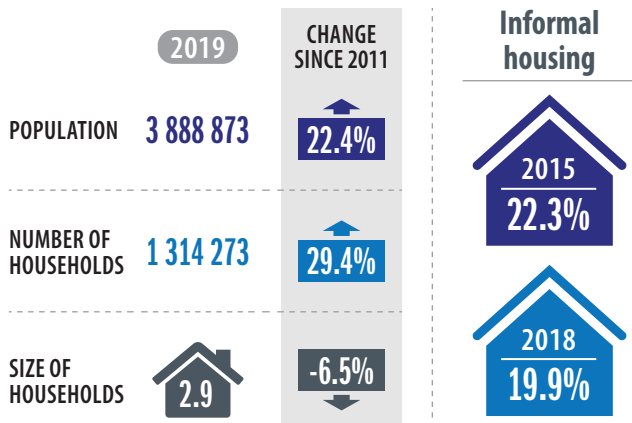


CITY OF EKURHULENI

The City of Ekurhuleni is one of three metropolitan municipalities in Gauteng Province and home to Africa's biggest international airport, OR Tambo. It covers an area of 1975 km² and has a population density (in 2019) of 1968 people per km².

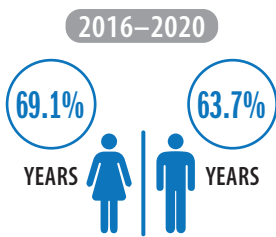


PEOPLE AND HOUSEHOLDS

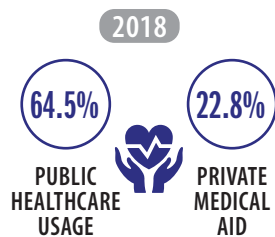


SOCIAL FABRIC

Life expectancy



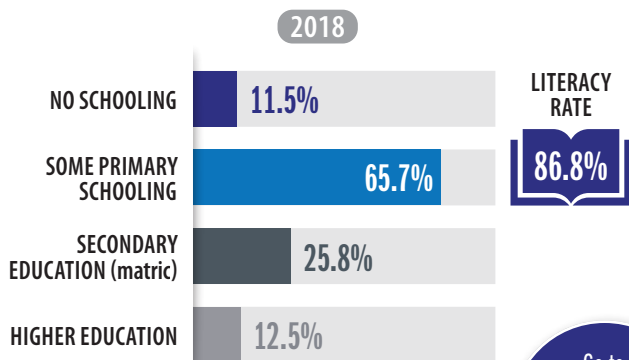
Healthcare



Levels of poverty



Education



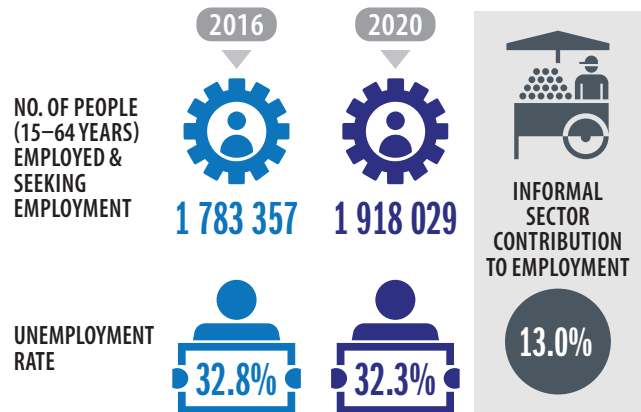
Go to SCODA to access SAFETY DATA for Ekurhuleni

ECONOMY

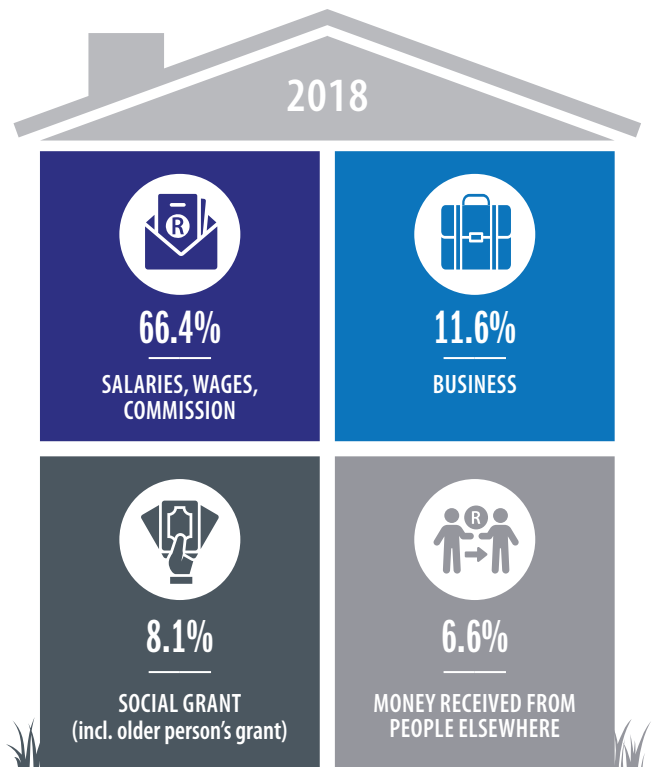
Contribution to the national economy (GVA)



Employment



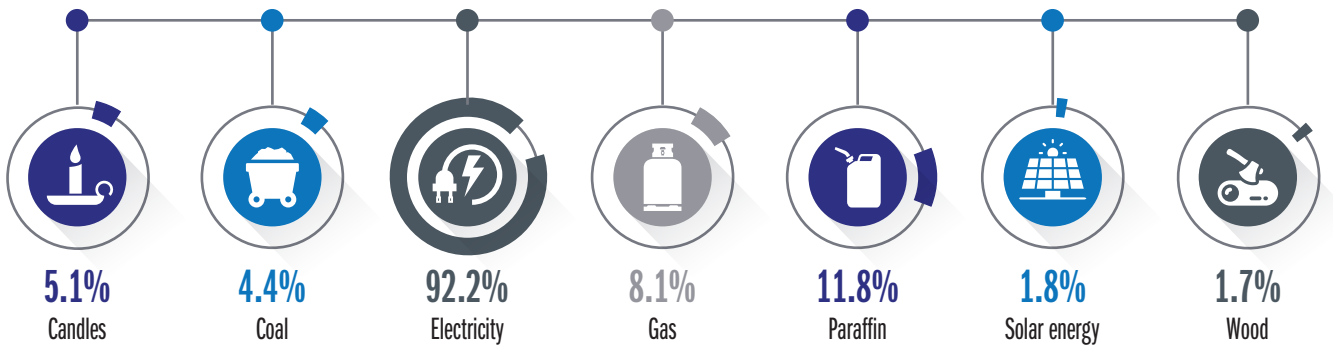
Main source of income for households



SUSTAINABILITY

Main source of energy/fuel for population

2018



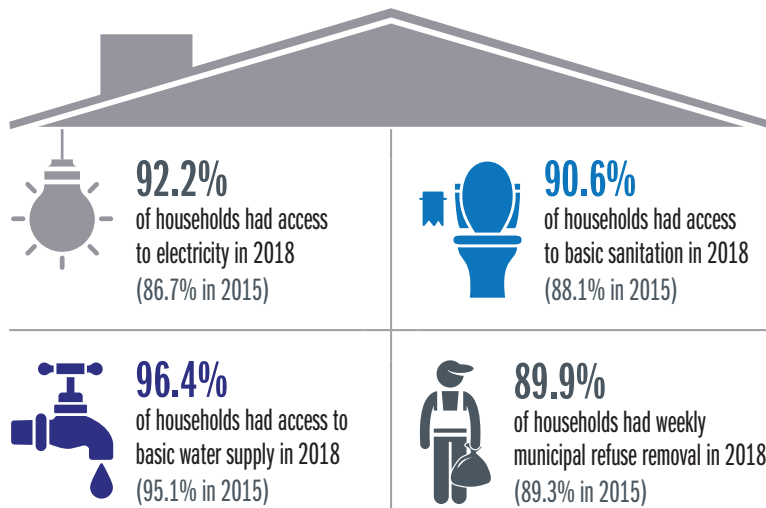
Households and recycling



Households and environmental problems



SERVICE DELIVERY



ICT connections per 100 000 people in 2018



226 118 domestic consumer units received free basic services in 2019

CITIZEN ENGAGEMENT

Local government elections

2016

NUMBER OF REGISTERED VOTERS



1 587 116

VOTER TURNOUT



58.0%

National elections

2019

NUMBER OF REGISTERED VOTERS



1 631 056

VOTER TURNOUT



73.6%

For more **FINANCE DATA**, go to SCODA

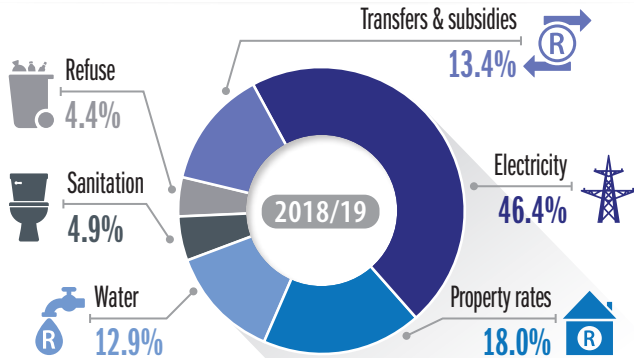
CITY FINANCE

Municipal revenue

2018/19

TOTAL REVENUE ▶ **R35 106-million**

REVENUE BY SOURCE



Audit outcomes

2018/19



Unauthorised expenditure

No data



Irregular expenditure

R413.0 MILLION



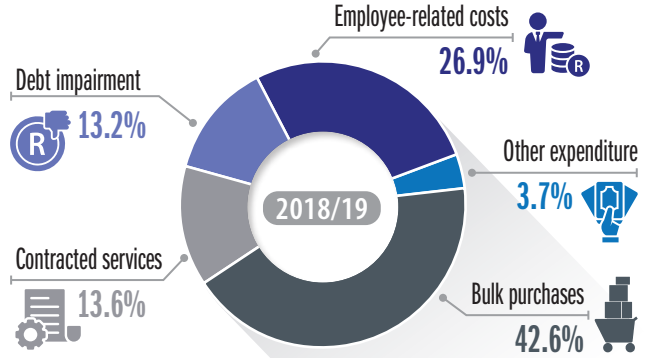
Fruitless & wasteful expenditures

No data

Operating expenditure

2018/19

TOTAL EXPENDITURE ▶ **R38 020-million** ▶ 108% of budget spent



Capital expenditure

2018/19

TOTAL EXPENDITURE ▶ **R5 983-million** ▶ 87% of budget spent

Maintenance as % of operating expenditure

2009 ▶ 2015 ▶ 2020

9.1%

3.0%

5.0%



National Treasury recommends cities should spend at least

8.0%

TRANSPORT

Mode of transport to education or work

	Bicycle/motorcycle	Bus (public)	Car (private/company)	Taxi (minibus, sedan & bakkie)	Train	Walking	Other
2015	1.5%	2.5%	32.5%	21.3%	6.5%	24.3%	11.0%
2018	1.2%	2.1%	33.2%	24.3%	3.5%	25.6%	9.9%

IN 2018



of commuters have a travel time to work of more than 60 minutes.



of households spent more than 10% of their income on public transport (74.8% in 2015)

