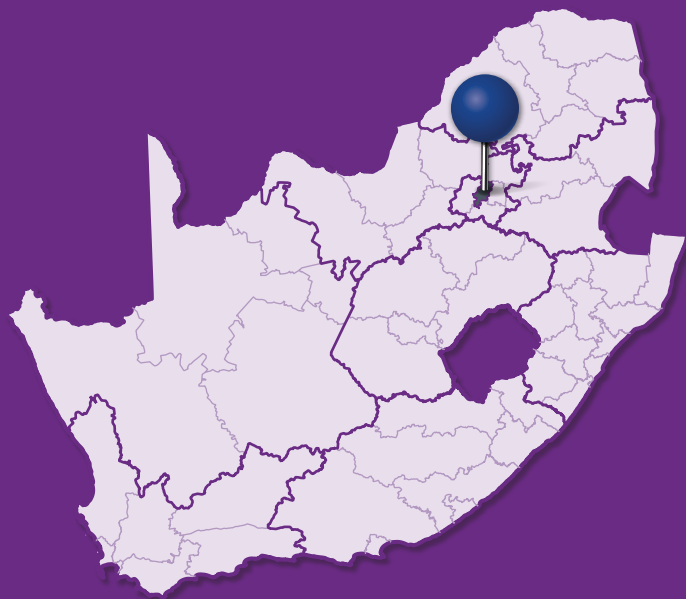


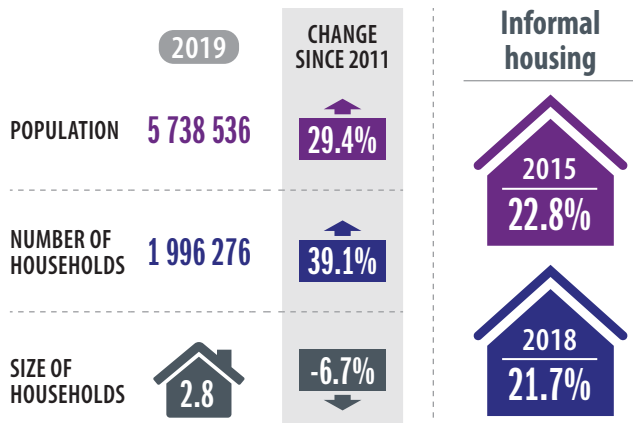


# CITY OF JOHANNESBURG

The City of Johannesburg houses South Africa's chief financial and industrial metropolis. It covers an area of 1644 km<sup>2</sup> and has a population density of 3488 people per km<sup>2</sup>, making it South Africa's most densely populated metropolitan municipality.

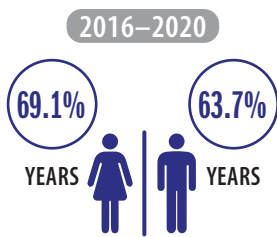


## PEOPLE AND HOUSEHOLDS

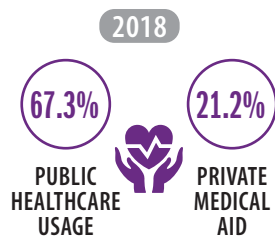


## SOCIAL FABRIC

### Life expectancy



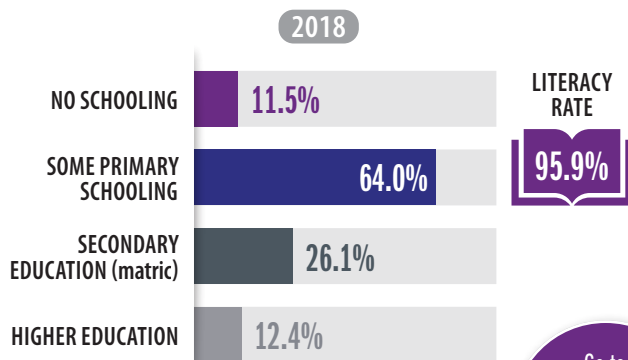
### Healthcare



### Levels of poverty



### Education



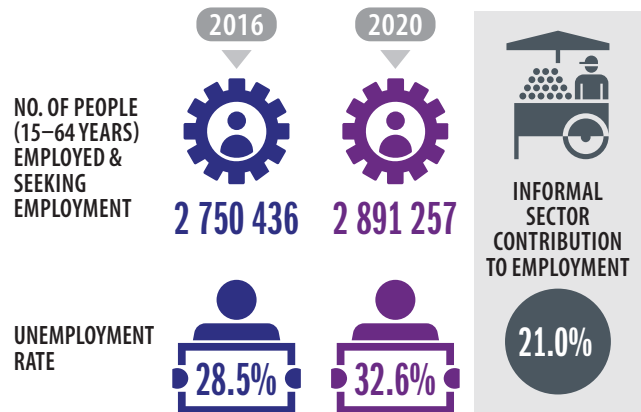
Go to SCODA to access SAFETY DATA for Johannesburg

## ECONOMY

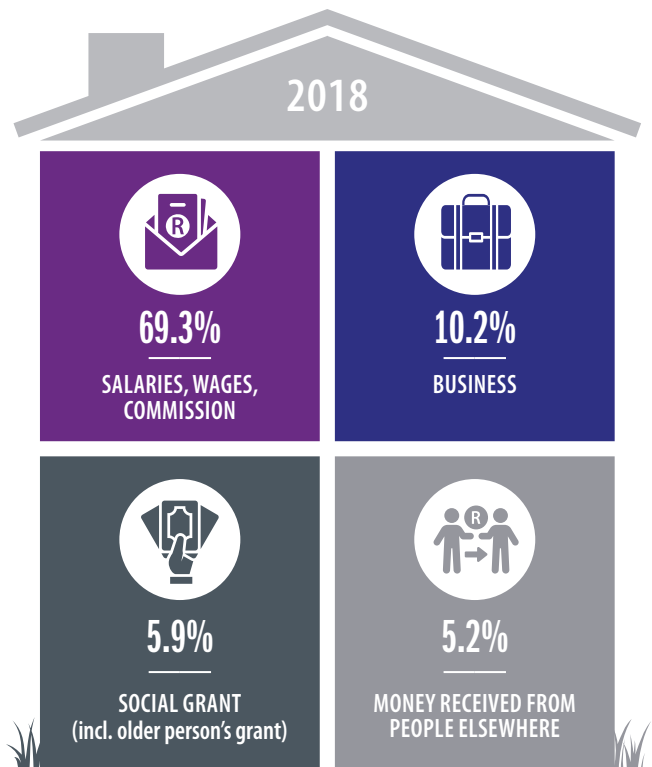
### Contribution to the national economy (GVA)



### Employment



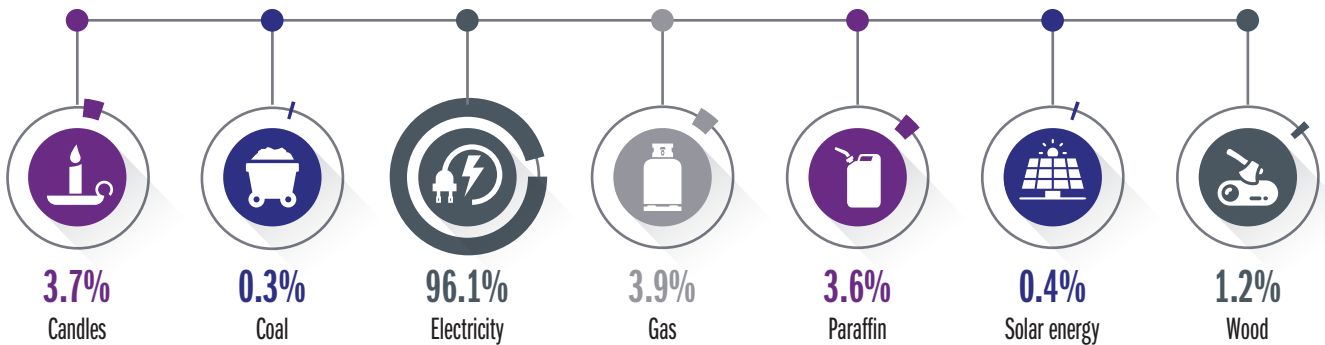
### Main source of income for households



# SUSTAINABILITY

## Main source of energy/fuel for population

2018



## Households and recycling



18.0% sorted for or by waste pickers



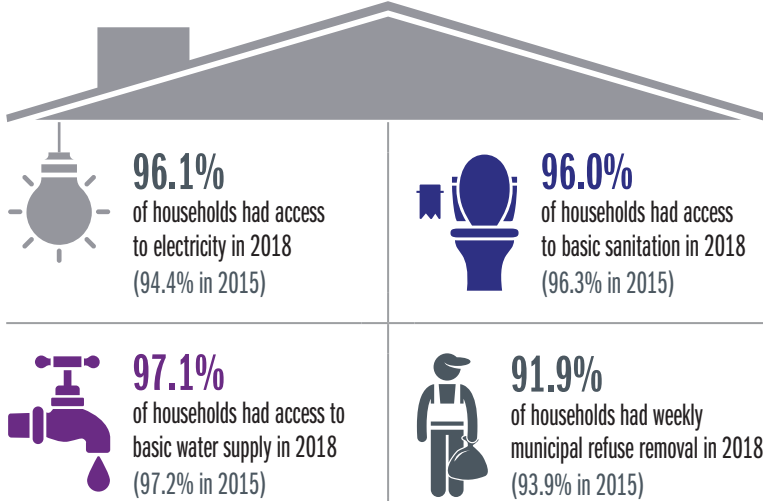
5.4% collected or dropped off at recycling depot



## Households and environmental problems



## SERVICE DELIVERY



## ICT connections per 100 000 people in 2018



11 520 domestic consumer units received free basic services in 2019

## CITIZEN ENGAGEMENT

### Local government elections

2016

NUMBER OF REGISTERED VOTERS



2 239 966

VOTER TURNOUT



57.2%

### National elections

2019

NUMBER OF REGISTERED VOTERS



2 291 299

VOTER TURNOUT



70.8%

For more FINANCE DATA, go to SCODA

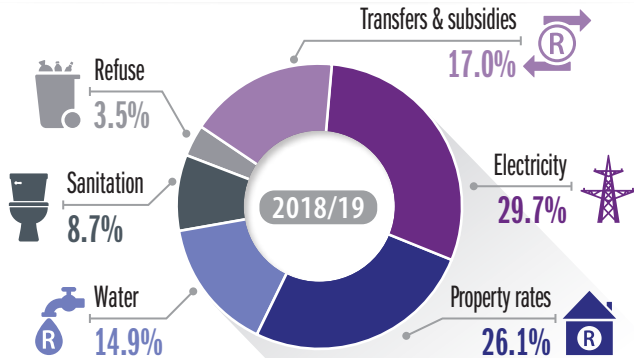
## CITY FINANCE

### Municipal revenue

2018/19

TOTAL REVENUE ▶ **R52 269-million**

#### REVENUE BY SOURCE



### Audit outcomes

2018/19



Unauthorised expenditure

**R480.6 MILLION**



Irregular expenditure

**R816.2 MILLION**



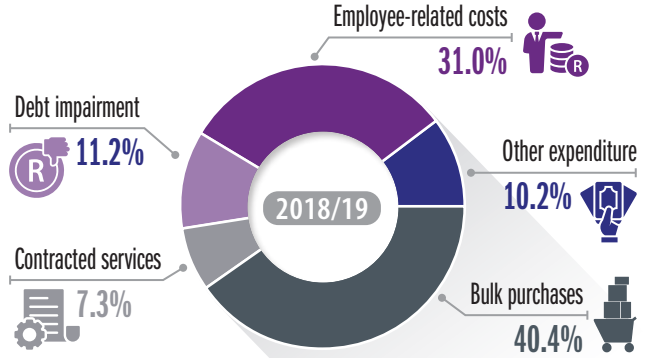
Fruitless & wasteful expenditures

**R117.0 MILLION**

### Operating expenditure

2018/19

TOTAL EXPENDITURE ▶ **R48 438-million** ▶ 95% of budget spent



### Capital expenditure

2018/19

TOTAL EXPENDITURE ▶ **R7 651-million** ▶ 98% of budget spent

### Maintenance as % of operating expenditure

2009 ▶ 2.3%    2015 ▶ 3.0%    2020 ▶ 6.0%



National Treasury recommends cities should spend at least

**8.0%**

## TRANSPORT

### Mode of transport to education or work

	Bicycle/motorcycle	Bus (public)	Car (private/company)	Taxi (minibus, sedan & bakkie)	Train	Walking	Other
2015	0.6%	3.6%	28.5%	29.0%	2.7%	26.3%	8.8%
2018	0.6%	3.4%	28.4%	29.2%	2.0%	27.3%	8.8%

IN 2018



of commuters have a travel time to work of more than 60 minutes.



of households spent more than 10% of their income on public transport (73.8% in 2015)

