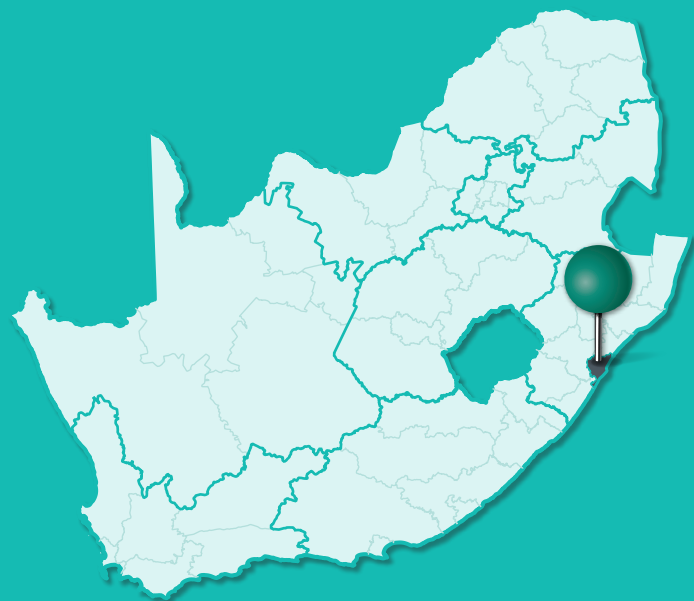




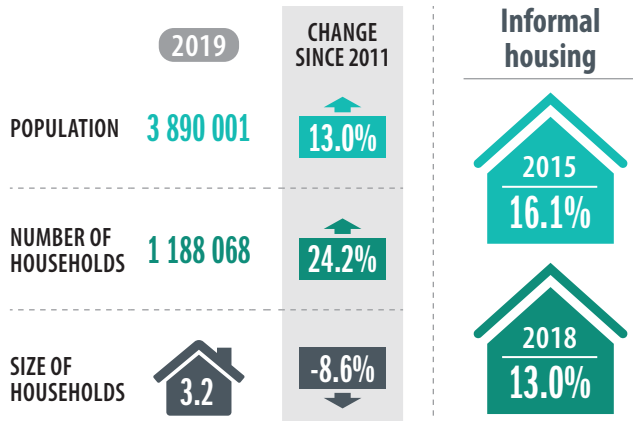
# ETHEKWINI METROPOLITAN MUNICIPALITY

---

The eThekweni Metropolitan Municipality is South Africa's third largest metropolitan municipality. It is the economic powerhouse of the KwaZulu-Natal Province and home to Africa's busiest seaport. It covers an area of 2555 km<sup>2</sup> and has a population density (in 2019) of 1521 people per km<sup>2</sup>.



## PEOPLE AND HOUSEHOLDS



## SOCIAL FABRIC

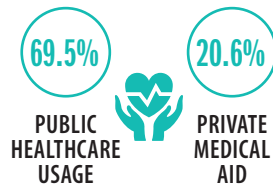
### Life expectancy

2016–2020



### Healthcare

2018



### Levels of poverty

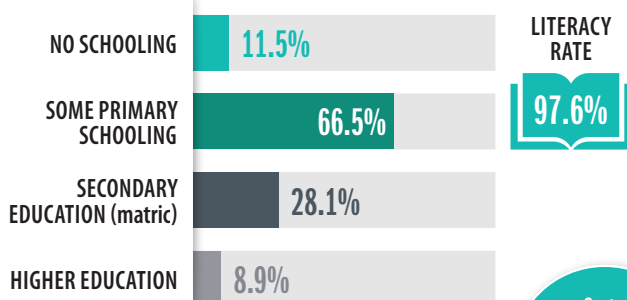
1 066 555 People living on less than R547 per month in 2018

2015–2019 inequality (Gini coefficient) 0.62

88.3% of the population had adequate access to food in 2018 (92.3% in 2015)

### Education

2018



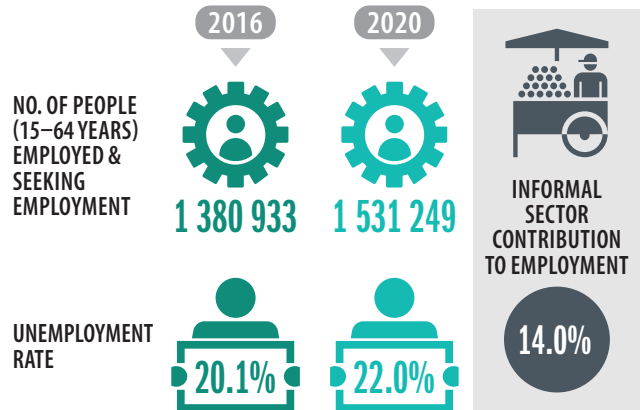
Go to SCODA to access SAFETY DATA for eThekweni

## ECONOMY

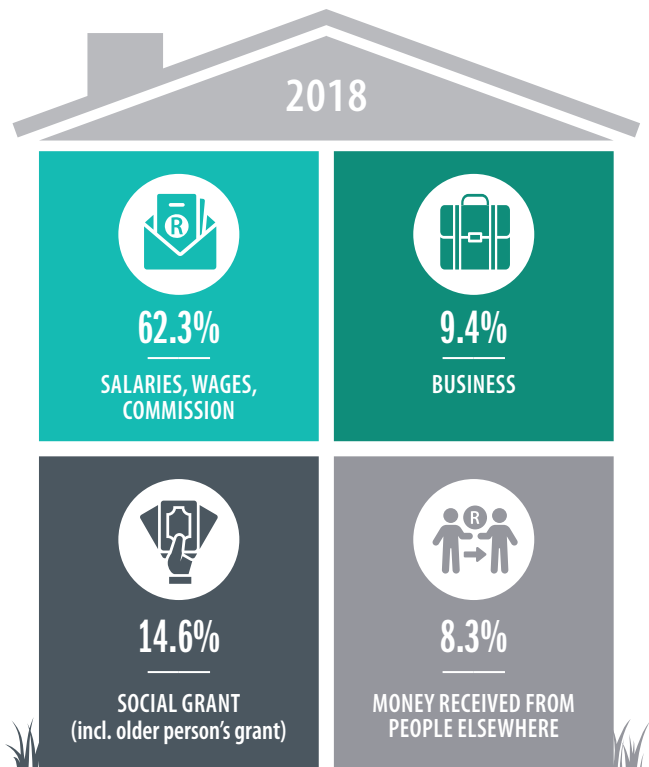
### Contribution to the national economy (GVA)



### Employment



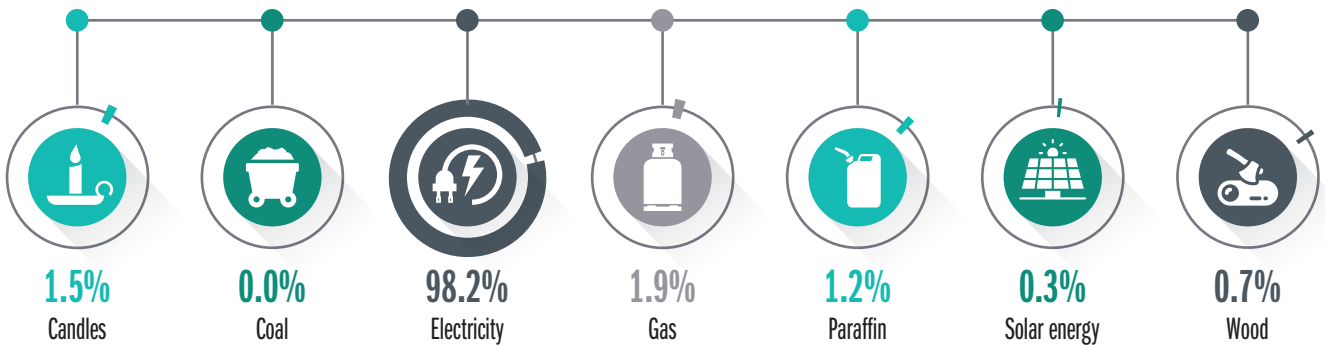
### Main source of income for households



## SUSTAINABILITY

### Main source of energy/fuel for population

2018



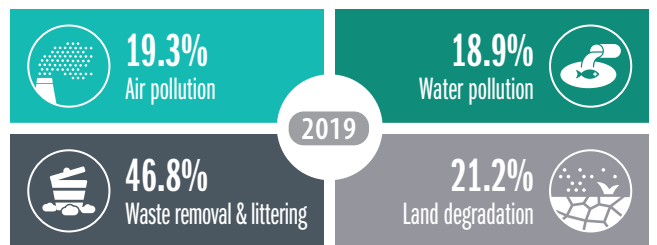
### Households and recycling



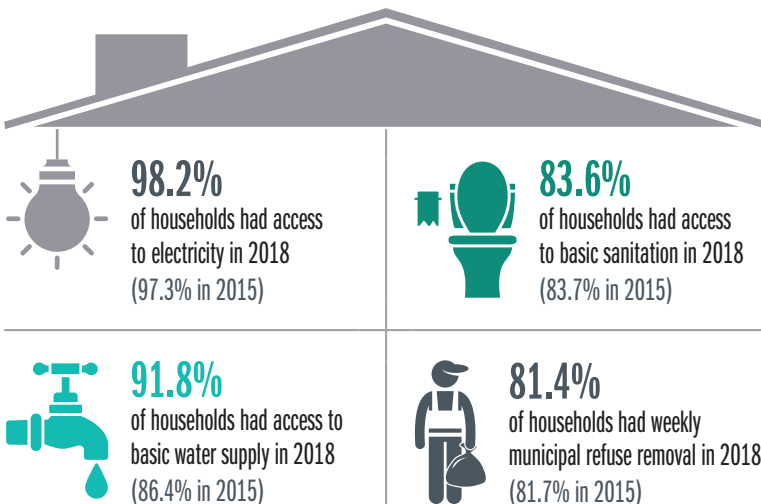
1.4% sorted for or by waste pickers

3.2% collected or dropped off at recycling depot

### Households and environmental problems



## SERVICE DELIVERY



### ICT connections per 100 000 people in 2018



191 033 domestic consumer units received free basic services in 2019

## CITIZEN ENGAGEMENT

### Local government elections

2016

NUMBER OF REGISTERED VOTERS



1 919 724

VOTER TURNOUT



59.8%

### National elections

2019

NUMBER OF REGISTERED VOTERS



1 961 406

VOTER TURNOUT



71.1%

For more FINANCE DATA, go to SCODA

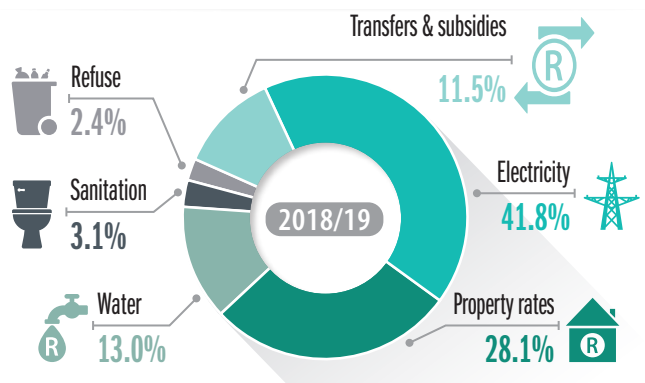
## CITY FINANCE

### Municipal revenue

2018/19

TOTAL REVENUE ▶ **R34 787-million**

#### REVENUE BY SOURCE



### Audit outcomes

2018/19



Unauthorised expenditure

No data



Irregular expenditure

**R2 341.4 MILLION**



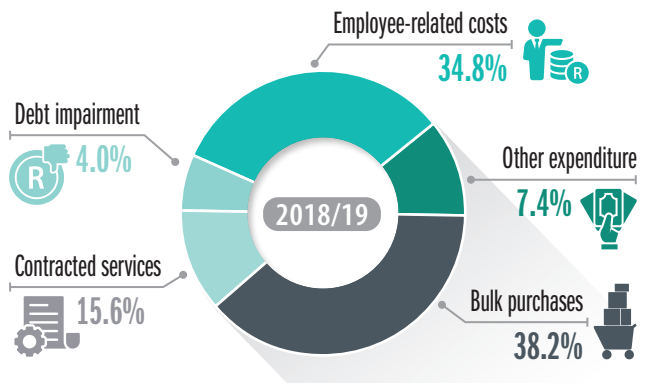
Fruitless & wasteful expenditures

**R4.1 MILLION**

### Operating expenditure

2018/19

TOTAL EXPENDITURE ▶ **R35 094-million** ▶ 100% of budget spent

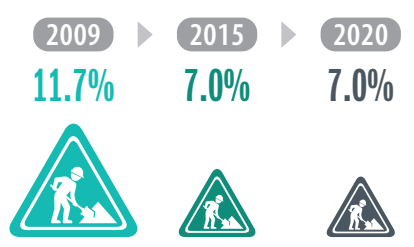


### Capital expenditure

2018/19

TOTAL EXPENDITURE ▶ **R5 373-million** ▶ 76% of budget spent

### Maintenance as % of operating expenditure



National Treasury recommends cities should spend at least **8.0%**

## TRANSPORT

### Mode of transport to education or work

	Bicycle/motorcycle	Bus (public)	Car (private/company)	Taxi (minibus, sedan & bakkie)	Train	Walking	Other
2015	0%	4.5%	24.4%	26.8%	3.0%	34.1%	6.8%
2018	0.2%	2.9%	26.5%	25.7%	2.9%	32.5%	9.0%

IN 2018



of commuters have a travel time to work of more than 60 minutes.



of households spent more than 10% of their income on public transport (78.5% in 2015)

