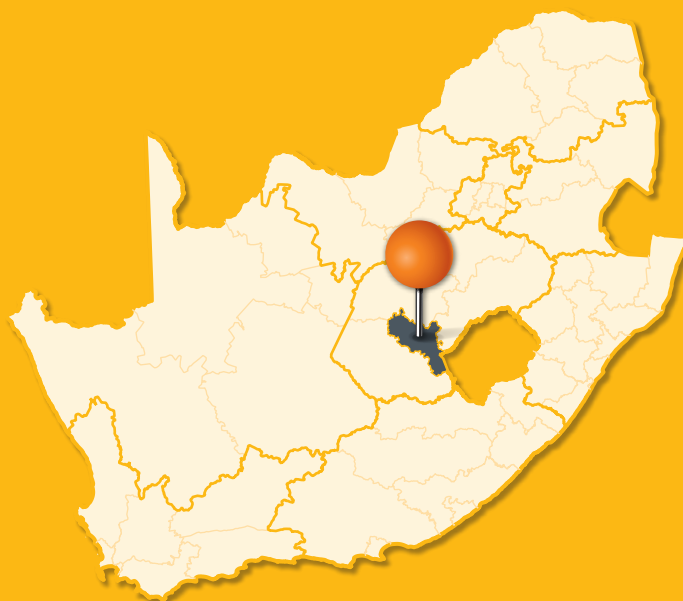


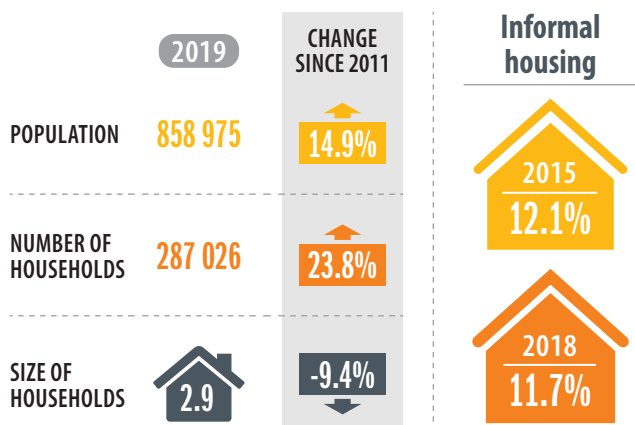


MANGAUNG METROPOLITAN MUNICIPALITY

Mangaung Metropolitan Municipality includes three urban centres: Bloemfontein (South Africa's judicial capital), Botshabelo and Thaba Nchu. It covers an area of 9886 km² and has a population density (in 2019) of 86 people per km².

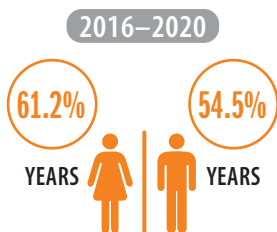


PEOPLE AND HOUSEHOLDS

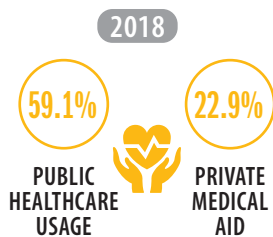


SOCIAL FABRIC

Life expectancy



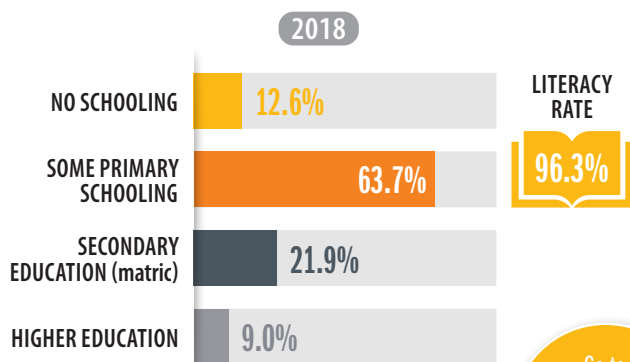
Healthcare



Levels of poverty



Education



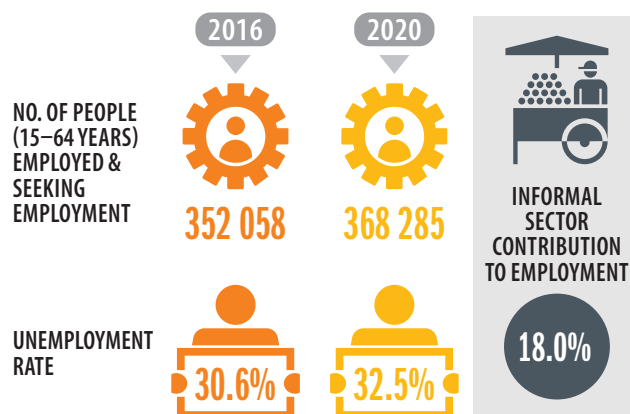
Go to SCODA to access SAFETY DATA for Mangaung

ECONOMY

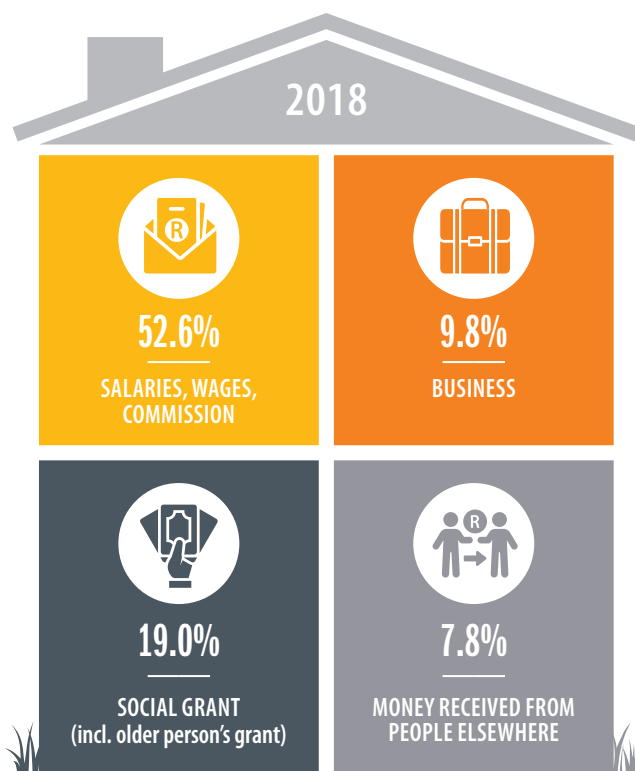
Contribution to the national economy (GVA)



Employment



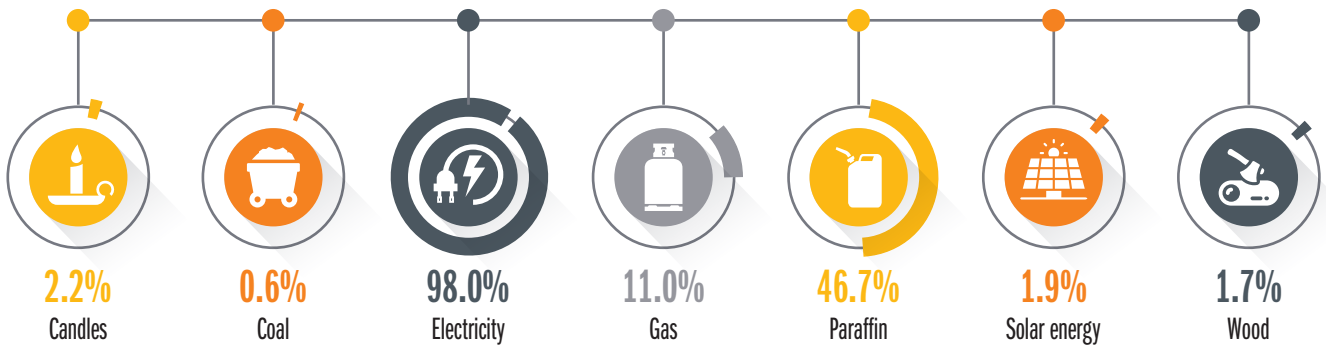
Main source of income for households



SUSTAINABILITY

Main source of energy/fuel for population

2018



Households and recycling

82.8% OF HOUSEHOLDS DO NOT SEPARATE THEIR WASTE



15.7% sorted for or by waste pickers



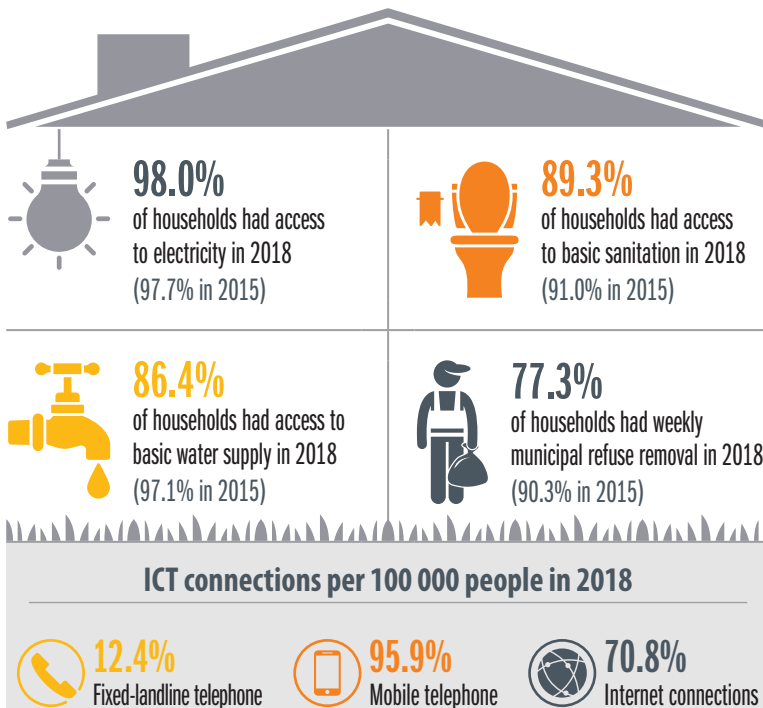
1.5% collected or dropped off at recycling depot



Households and environmental problems



SERVICE DELIVERY



32 105 domestic consumer units received free basic services in 2019

CITIZEN ENGAGEMENT

Local government elections

2016

NUMBER OF REGISTERED VOTERS



425 211

VOTER TURNOUT



57.8%

National elections

2019

NUMBER OF REGISTERED VOTERS



425 263

VOTER TURNOUT



65.4%

For more FINANCE DATA, go to SCODA

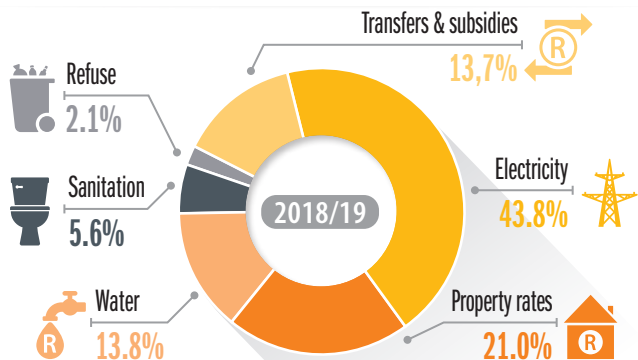
CITY FINANCE

Municipal revenue

2018/19

TOTAL REVENUE ▶ **R6 818-million**

REVENUE BY SOURCE



Audit outcomes

2018/19



Unauthorised expenditure

R1 364.0 MILLION



Irregular expenditure

R842.5 MILLION



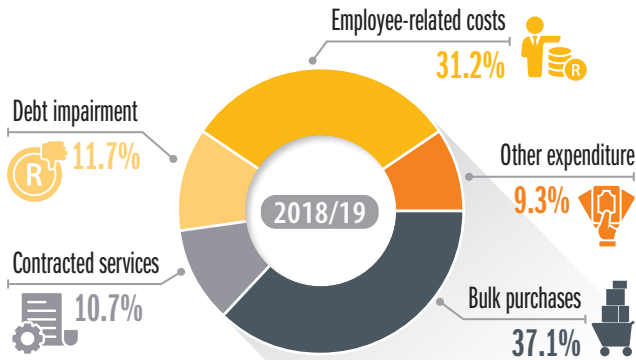
Fruitless & wasteful expenditures

R9.5 MILLION

Operating expenditure

2018/19

TOTAL EXPENDITURE ▶ **R7 859-million** ▶ 125% of budget spent



Capital expenditure

2018/19

TOTAL EXPENDITURE ▶ **R822-million** ▶ 73% of budget spent

Maintenance as % of operating expenditure

2009

7.4%



2020

3.0%



National Treasury recommends cities should spend at least

8.0%

TRANSPORT

Mode of transport to education or work

	Bicycle/motorcycle	Bus (public)	Car (private/company)	Taxi (minibus, sedan & bakkie)	Train	Walking	Other
2015	1.0%	8.5%	27.1%	20.4%	0%	39.7%	3.0%
2018	1.7%	8.2%	27.5%	19.3%	0.4%	40.0%	2.6%

IN 2018



of commuters have a travel time to work of more than 60 minutes.



of households spent more than 10% of their income on public transport (79.5% in 2015)

