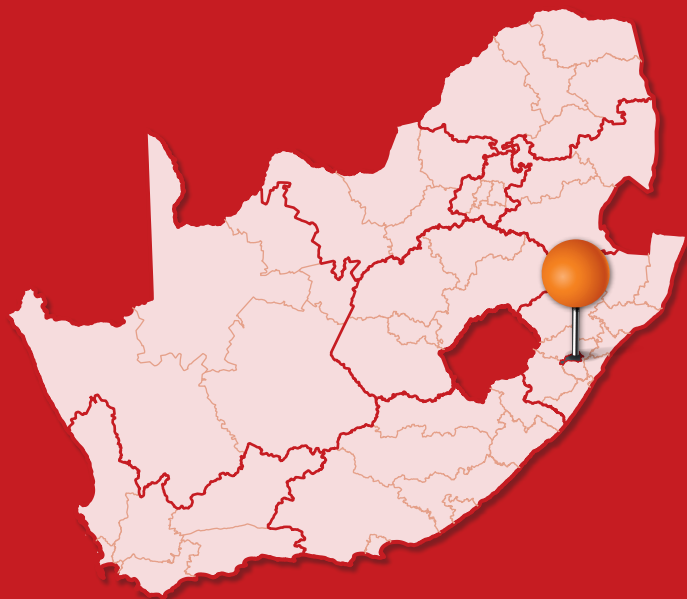




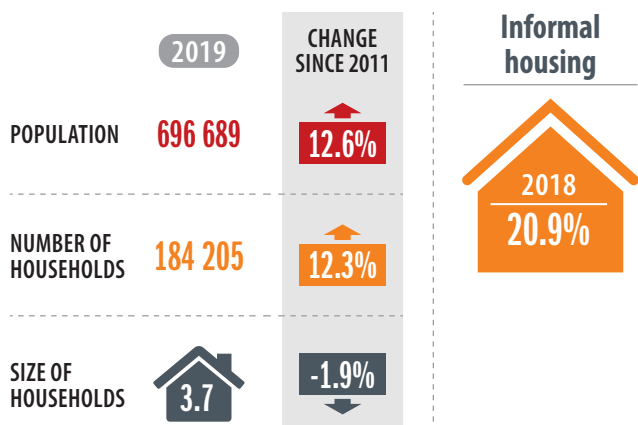
# MSUNDUZI LOCAL MUNICIPALITY

---

Msunduzi Municipality includes the capital city of KwaZulu-Natal Province, Pietermaritzburg. It covers an area of 751 km<sup>2</sup> and has a population density (in 2019) of 927 km<sup>2</sup>.



## PEOPLE AND HOUSEHOLDS



## ECONOMY

### Contribution to the national economy (GVA)

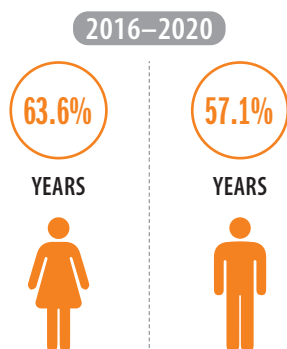


### Employment



## SOCIAL FABRIC

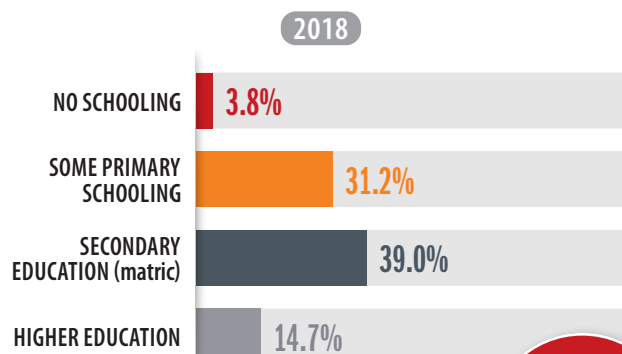
### Life expectancy



### Levels of poverty



### Education



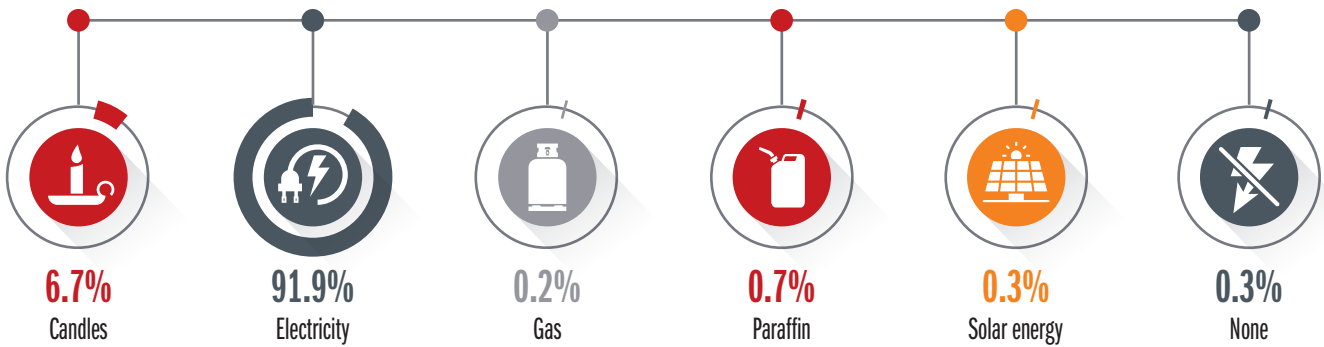
Go to SCODA to access SAFETY DATA for Msunduzi



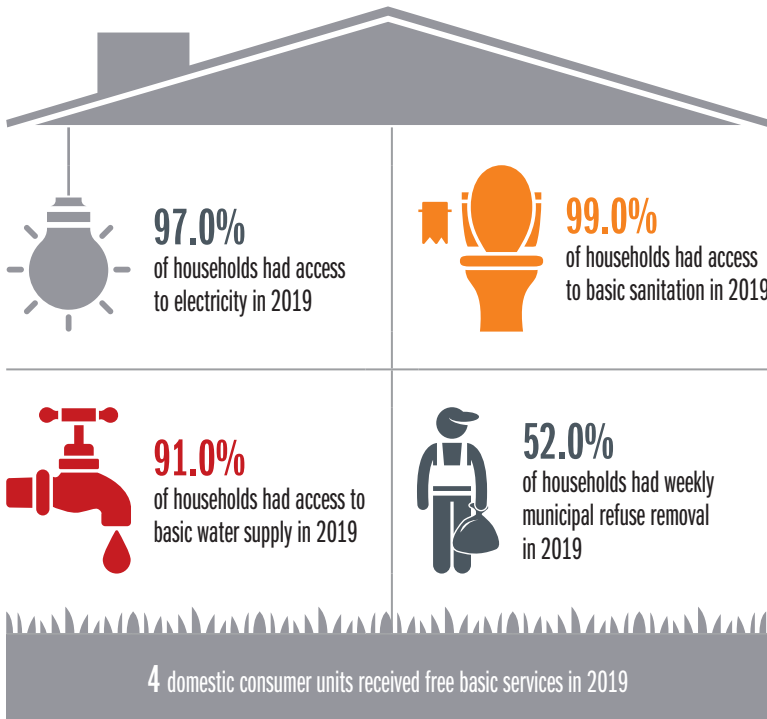
# SUSTAINABILITY

## Main source of energy/fuel for population

2018



## SERVICE DELIVERY



## CITIZEN ENGAGEMENT

### Local government elections

2016

NUMBER OF REGISTERED VOTERS



340 998

VOTER TURNOUT



67.3%

### National elections

2019

NUMBER OF REGISTERED VOTERS



350 112

VOTER TURNOUT



74.3%



# CITY FINANCE

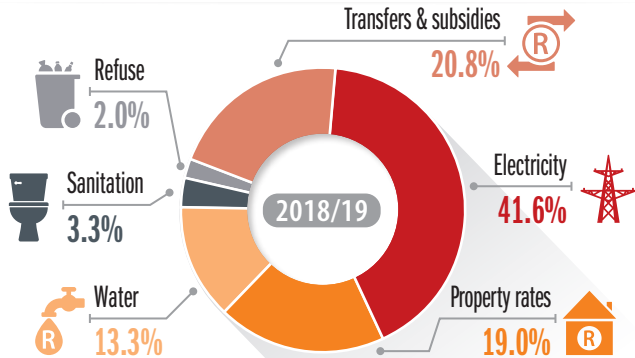
For more  
**FINANCE**  
**DATA,**  
go to SCODA

## Municipal revenue

2018/19

TOTAL REVENUE ▶ **R5 229-million**

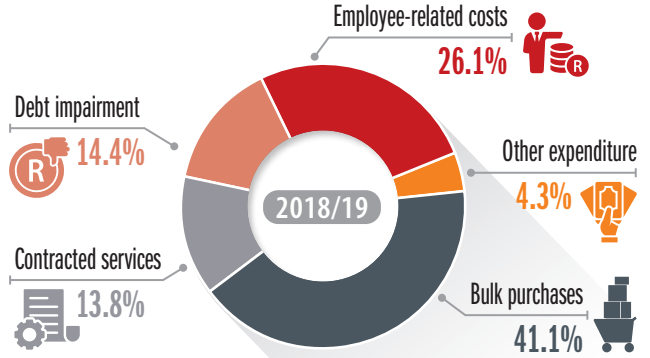
### REVENUE BY SOURCE



## Operating expenditure

2018/19

TOTAL EXPENDITURE ▶ **R5 675-million** ▶ 115% of budget spent



## Audit outcomes

2018/19



Unauthorised expenditure

**R170.0 MILLION**



Irregular expenditure

**R215.0 MILLION**



Fruitless & wasteful expenditures

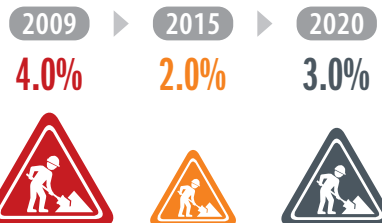
**R4.50 MILLION**

## Capital expenditure

2018/19

TOTAL EXPENDITURE ▶ **R613-million** ▶ 107% of budget spent

## Maintenance as % of operating expenditure



National Treasury recommends cities should spend at least

**8.0%**

# TRANSPORT

## Mode of transport to education or work

2015



**IN 2018** ▶ **100%** of commuters have a travel time to work of more than 60 minutes.

