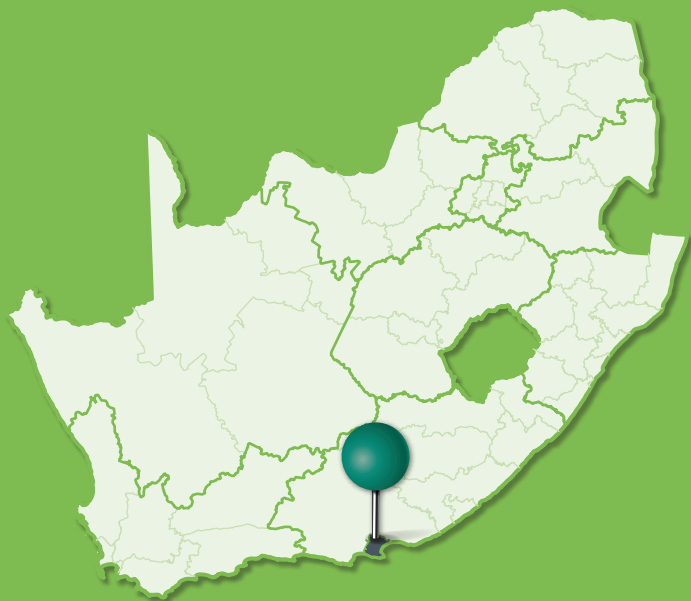


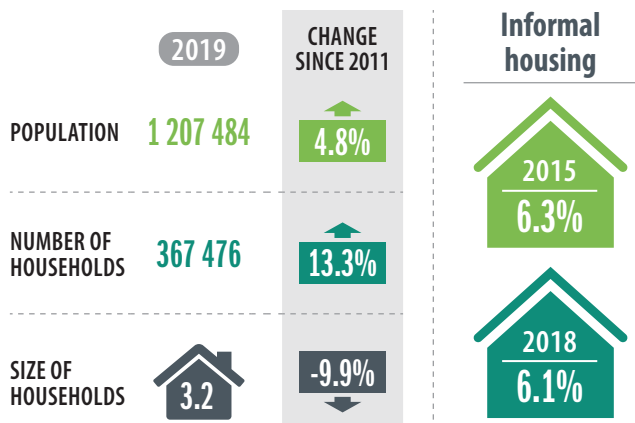


NELSON MANDELA BAY METROPOLITAN MUNICIPALITY

Nelson Mandela Bay Metropolitan Municipality is the gateway to the Eastern Cape Province. It is located on the shores of Algoa Bay, midway between Cape Town and Durban and 1058 km from Johannesburg. It covers 1956 km² and has a population density (in 2019) of 617 people per km².

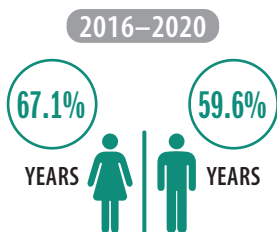


PEOPLE AND HOUSEHOLDS

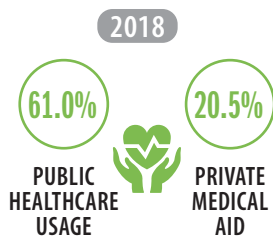


SOCIAL FABRIC

Life expectancy



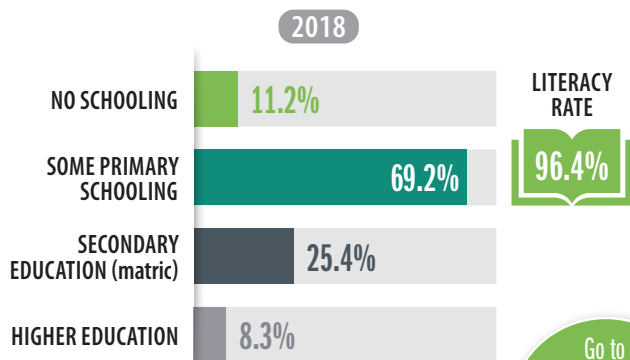
Healthcare



Levels of poverty



Education



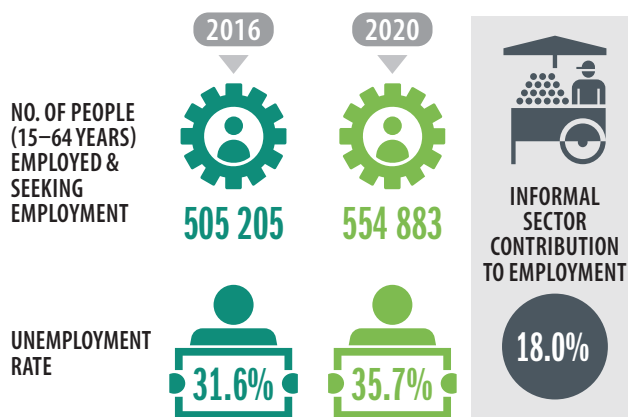
Go to SCODA to access SAFETY DATA for Nelson Mandela Bay

ECONOMY

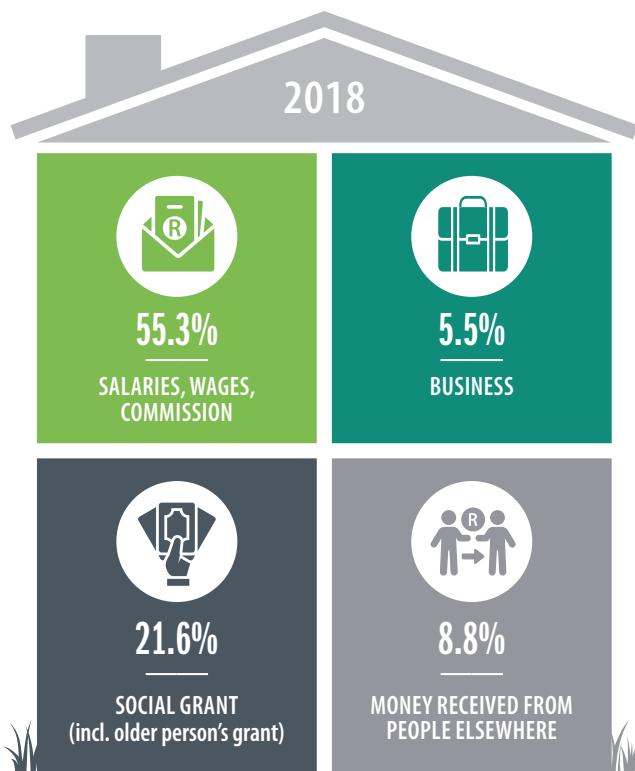
Contribution to the national economy (GVA)



Employment



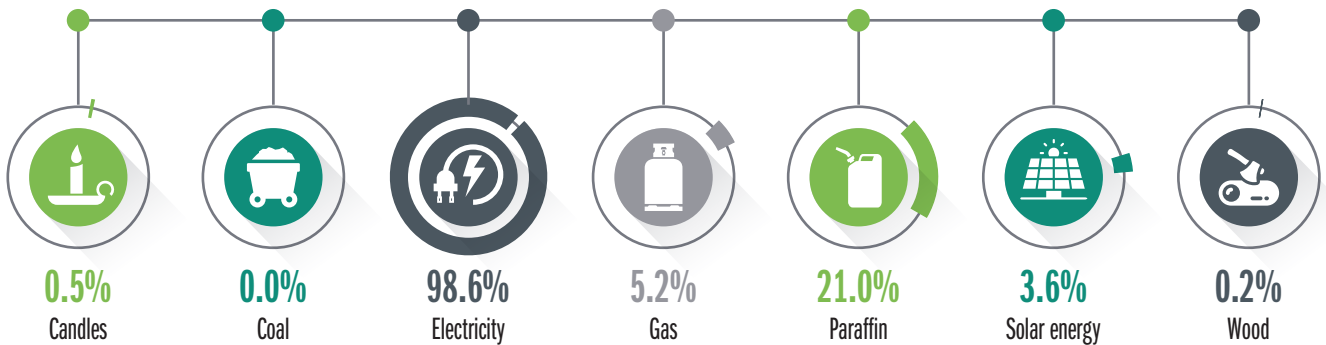
Main source of income for households



SUSTAINABILITY

Main source of energy/fuel for population

2018



Households and recycling



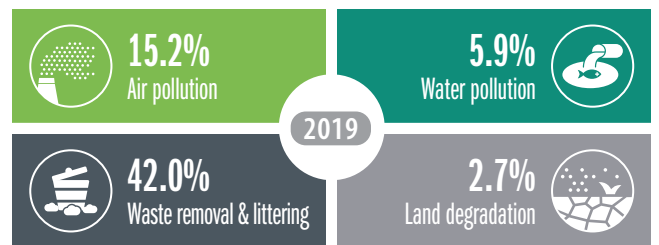
10.0% sorted for or by waste pickers



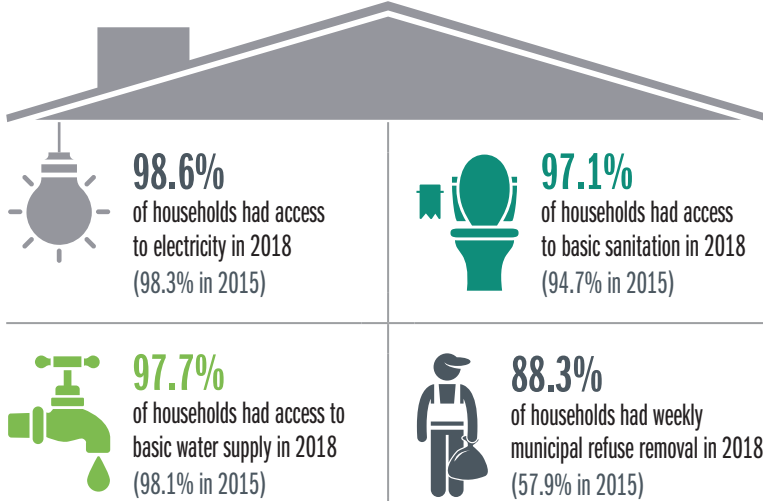
2.0% collected or dropped off at recycling depot



Households and environmental problems



SERVICE DELIVERY



ICT connections per 100 000 people in 2018



63 706 domestic consumer units received free basic services in 2019

CITIZEN ENGAGEMENT

Local government elections

2016

NUMBER OF REGISTERED VOTERS



609 217

VOTER TURNOUT



64.0%

National elections

2019

NUMBER OF REGISTERED VOTERS



607 134

VOTER TURNOUT



66.5%

For more FINANCE DATA, go to SCODA

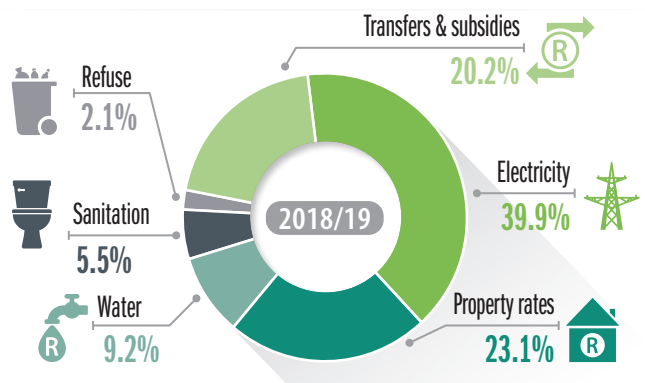
CITY FINANCE

Municipal revenue

2018/19

TOTAL REVENUE ▶ **R10 097-million**

REVENUE BY SOURCE



Audit outcomes

2018/19



Unauthorised expenditure

R446.4 MILLION



Irregular expenditure

R 2876.7 MILLION



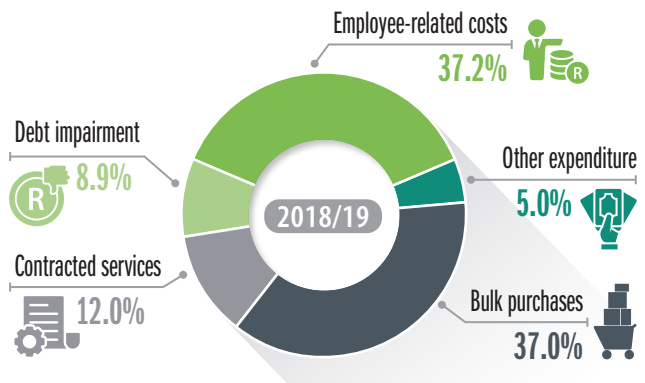
Fruitless & wasteful expenditures

R103.4 MILLION

Operating expenditure

2018/19

TOTAL EXPENDITURE ▶ **R10 171-million** ▶ 100% of budget spent

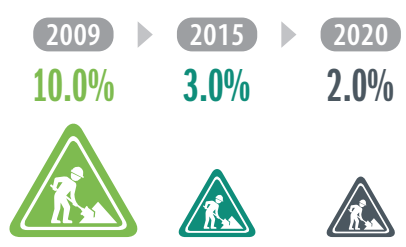


Capital expenditure

2018/19

TOTAL EXPENDITURE ▶ **R1 667-million** ▶ 96% of budget spent

Maintenance as % of operating expenditure



National Treasury recommends cities should spend at least **8.0%**

TRANSPORT

Mode of transport to education or work

	Bicycle/motorcycle	Bus (public)	Car (private/company)	Taxi (minibus, sedan & bakkie)	Train	Walking	Other
2015	0.4%	6.4%	28.0%	19.7%	0.5%	37.4%	7.3%
2018	1.6%	4.4%	30.5%	19.7%	0.2%	34.9%	8.5%

IN 2018



of commuters have a travel time to work of more than 60 minutes.



of households spent more than 10% of their income on public transport (71.2% in 2015)

